



ELECTRONIC COPY

LG731544269
Report verification at igi.org



September 13, 2025

IGI Report Number **LG731544269**

Description **LABORATORY GROWN DIAMOND**

Shape and Cutting Style **ROUND BRILLIANT**

Measurements **9.38 - 9.41 X 5.63 MM**

GRADING RESULTS

Carat Weight **3.03 CARATS**

Color Grade **F**

Clarity Grade **VVS 2**

Cut Grade **IDEAL**

September 13, 2025
IGI Report Number **LG731544269**
Description **LABORATORY GROWN DIAMOND**
Shape and Cutting Style **ROUND BRILLIANT**
Measurements **9.38 - 9.41 X 5.63 MM**

GRADING RESULTS

Carat Weight **3.03 CARATS**

Color Grade **F**

Clarity Grade **VVS 2**

Cut Grade **IDEAL**

ADDITIONAL GRADING INFORMATION

Polish **EXCELLENT**

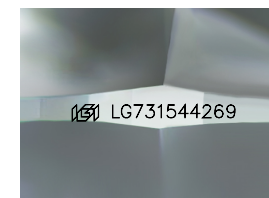
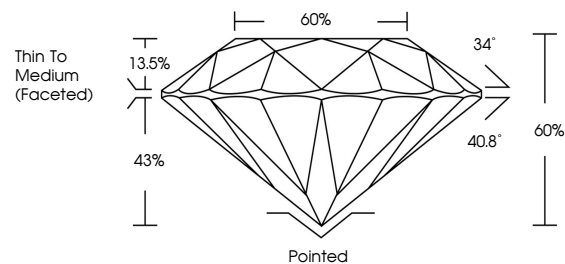
Symmetry **EXCELLENT**

Fluorescence **NONE**

Inscription(s) **IGI LG731544269**

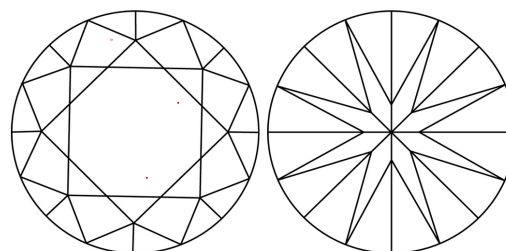
Comments: This Laboratory Grown Diamond was created by Chemical Vapor Deposition (CVD) growth process.
Type IIa

PROPORTIONS



Sample Image Used

CLARITY CHARACTERISTICS



KEY TO SYMBOLS

Red symbols indicate internal characteristics.
Green symbols indicate external characteristics.

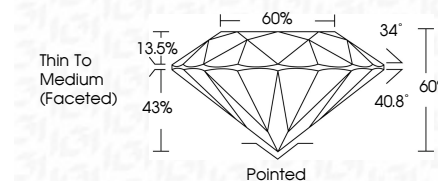
COLOR

D E F G H I J Faint Very Light Light

CLARITY

IF WS¹⁻² VS¹⁻² SI¹⁻² I¹⁻³

Internally Flawless Very Very Slightly Included Very Slightly Included Slightly Included Included



ADDITIONAL GRADING INFORMATION

Polish **EXCELLENT**

Symmetry **EXCELLENT**

Fluorescence **NONE**

Inscription(s) **IGI LG731544269**

Comments: This Laboratory Grown Diamond was created by Chemical Vapor Deposition (CVD) growth process.
Type IIa



IGI



September 13, 2025	3.03 CARATS	F	VVS 2	IDEAL	60%	60%	Pointed	EXCELLENT	EXCELLENT	NONE	IGI LG731544269
IGI Report No LG731544269	Carat Weight	Color Grade	Clarity Grade	Cut Grade	Depth	Table	Thin To Medium (Faceted)	Polish	Symmetry	Fluorescence	Inscription(s)
ROUND BRILLIANT	9.38 - 9.41 X 5.63 MM	F	VVS 2	IDEAL	60%	60%	Pointed	EXCELLENT	EXCELLENT	NONE	IGI LG731544269

Comments: This Laboratory Grown Diamond was created by Chemical Vapor Deposition (CVD) growth process.
Type IIa