



**ELECTRONIC COPY**

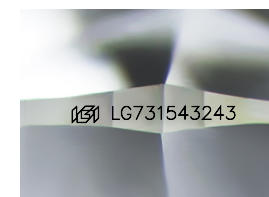
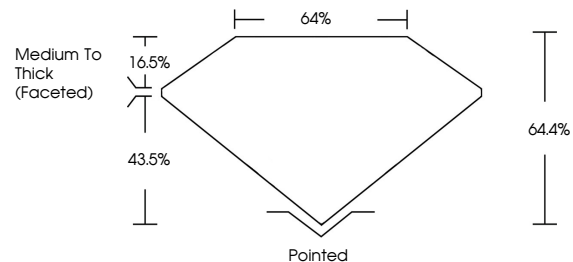
LG731543243  
Report verification at igi.org



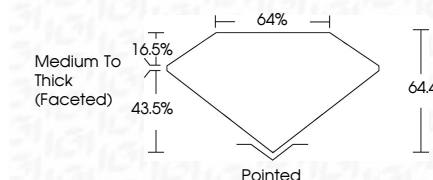
September 12, 2025  
IGI Report Number **LG731543243**  
Description **LABORATORY GROWN DIAMOND**  
Shape and Cutting Style **SQUARE CUSHION MODIFIED BRILLIANT**  
Measurements **7.34 X 7.06 X 4.55 MM**  
**GRADING RESULTS**  
Carat Weight **2.06 CARATS**  
Color Grade **FANCY VIVID BLUE**  
Clarity Grade **VVS 2**

September 12, 2025  
IGI Report Number **LG731543243**  
Description **LABORATORY GROWN DIAMOND**  
Shape and Cutting Style **SQUARE CUSHION MODIFIED BRILLIANT**  
Measurements **7.34 X 7.06 X 4.55 MM**  
**GRADING RESULTS**  
Carat Weight **2.06 CARATS**  
Color Grade **FANCY VIVID BLUE**  
Clarity Grade **VVS 2**

**PROPORTIONS**



Sample Image Used



**ADDITIONAL GRADING INFORMATION**

Polish **EXCELLENT**  
Symmetry **VERY GOOD**  
Fluorescence **NONE**  
Inscription(s) **IGI LG731543243**

Comments: This Laboratory Grown Diamond was created by High Pressure High Temperature (HPHT) growth process. Indications of post-growth treatment.

**ADDITIONAL GRADING INFORMATION**

Polish **EXCELLENT**  
Symmetry **VERY GOOD**  
Fluorescence **NONE**  
Inscription(s) **IGI LG731543243**

Comments: This Laboratory Grown Diamond was created by High Pressure High Temperature (HPHT) growth process. Indications of post-growth treatment.

**COLOR**

D E F G H I J Faint Very Light Light

**CLARITY**

IF	VS <sup>1-2</sup>	VS <sup>1-2</sup>	SI <sup>1-2</sup>	I <sup>1-3</sup>
Internally Flawless	Very Very Slightly Included	Very Slightly Included	Slightly Included	Included



**IGI**



September 12, 2025  
IGI Report No LG731543243  
**SQUARE CUSHION MODIFIED BRILLIANT**  
7.34 X 7.06 X 4.55 MM  
2.06 CARATS  
FANCY VIVID BLUE  
VVS 2  
64.4%  
64.4%  
Medium To Thick (Faceted)  
Pointed  
EXCELLENT  
VERY GOOD  
NONE  
IGI LG731543243  
Comments: This Laboratory Grown Diamond was created by High Pressure High Temperature (HPHT) growth process. Indications of post-growth treatment.