



ELECTRONIC COPY

LG731541249
Report verification at igi.org



August 30, 2025
IGI Report Number LG731541249
Description LABORATORY GROWN DIAMOND
Shape and Cutting Style CUT CORNERED RECTANGULAR MODIFIED BRILLIANT
Measurements 7.79 X 5.37 X 3.65 MM
GRADING RESULTS
Carat Weight 1.33 CARAT
Color Grade E
Clarity Grade VVS 1

LABORATORY GROWN DIAMOND REPORT

August 30, 2025
IGI Report Number LG731541249
Description LABORATORY GROWN DIAMOND
Shape and Cutting Style CUT CORNERED RECTANGULAR MODIFIED BRILLIANT
Measurements 7.79 X 5.37 X 3.65 MM

GRADING RESULTS

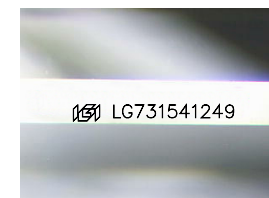
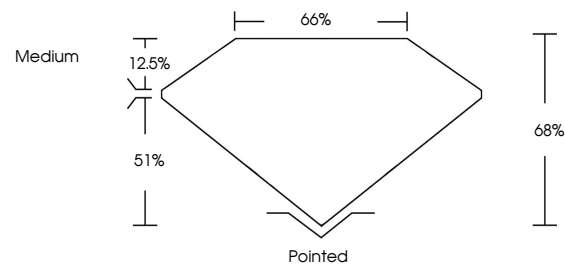
Carat Weight 1.33 CARAT
Color Grade E
Clarity Grade VVS 1

ADDITIONAL GRADING INFORMATION

Polish EXCELLENT
Symmetry EXCELLENT
Fluorescence NONE
Inscription(s) LG731541249

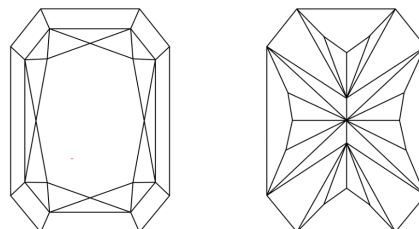
Comments: This Laboratory Grown Diamond was created by Chemical Vapor Deposition (CVD) growth process. Type IIa

PROPORTIONS



Sample Image Used

CLARITY CHARACTERISTICS



KEY TO SYMBOLS

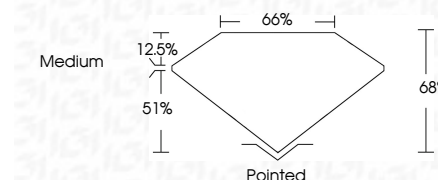
Red symbols indicate internal characteristics.
Green symbols indicate external characteristics.

COLOR

D E F G H I J Faint Very Light Light

CLARITY

IF WS 1-2 VS 1-2 SI 1-2 I 1-3
Internally Flawless Very Very Slightly Included Very Slightly Included Slightly Included Included



ADDITIONAL GRADING INFORMATION

Polish EXCELLENT
Symmetry EXCELLENT
Fluorescence NONE
Inscription(s) LG731541249
Comments: This Laboratory Grown Diamond was created by Chemical Vapor Deposition (CVD) growth process. Type IIa



August 30, 2025
IGI Report No LG731541249
CUT CORNERED RECT. MODIFIED BRILLIANT
1.33 CARAT E
7.79 X 5.37 X 3.65 MM
Color Grade VVS 1
Depth 68%
Table 65%
Girdle Medium
Culet Pointed
Polish EXCELLENT
Symmetry EXCELLENT
Fluorescence NONE
Inscription(s) LG731541249
Comments: This Laboratory Grown Diamond was created by Chemical Vapor Deposition (CVD) growth process. Type IIa