



ELECTRONIC COPY

LABORATORY GROWN DIAMOND REPORT

September 1, 2025
IGI Report Number LG731539363
Description LABORATORY GROWN DIAMOND
Shape and Cutting Style PRINCESS CUT
Measurements 7.86 X 7.66 X 5.62 MM

GRADING RESULTS

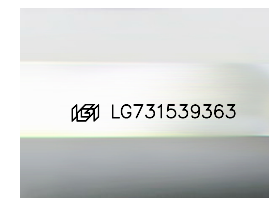
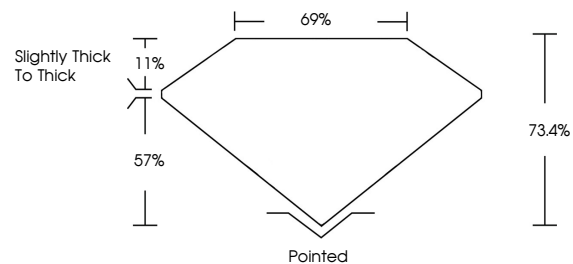
Carat Weight 3.04 CARATS
Color Grade E
Clarity Grade VVS 1

ADDITIONAL GRADING INFORMATION

Polish EXCELLENT
Symmetry EXCELLENT
Fluorescence NONE
Inscription(s) IGI LG731539363

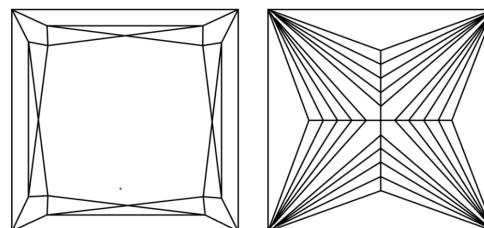
Comments: This Laboratory Grown Diamond was created by Chemical Vapor Deposition (CVD) growth process. Type IIa

PROPORTIONS



Sample Image Used

CLARITY CHARACTERISTICS



KEY TO SYMBOLS

Red symbols indicate internal characteristics.
Green symbols indicate external characteristics.

COLOR

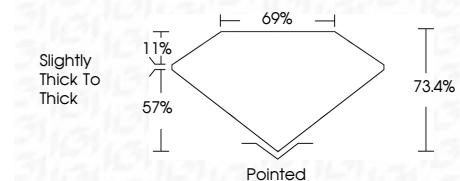
D E F G H I J Faint Very Light Light

CLARITY

IF WS¹⁻² VS¹⁻² SI¹⁻² I¹⁻³
Internally Flawless Very Very Slightly Included Very Slightly Included Slightly Included Included



September 1, 2025
IGI Report Number LG731539363
Description LABORATORY GROWN DIAMOND
Shape and Cutting Style PRINCESS CUT
Measurements 7.86 X 7.66 X 5.62 MM
GRADING RESULTS
Carat Weight 3.04 CARATS
Color Grade E
Clarity Grade VVS 1



ADDITIONAL GRADING INFORMATION

Polish EXCELLENT
Symmetry EXCELLENT
Fluorescence NONE
Inscription(s) IGI LG731539363
Comments: This Laboratory Grown Diamond was created by Chemical Vapor Deposition (CVD) growth process. Type IIa



September 1, 2025
IGI Report No LG731539363
PRINCESS CUT
7.86 X 7.66 X 5.62 MM
3.04 CARATS
E
3.04 CARATS
VVS 1
73.4%
57%
Slightly Thick To Thick
Pointed
EXCELLENT
EXCELLENT
NONE
IGI LG731539363
Comments: This Laboratory Grown Diamond was created by Chemical Vapor Deposition (CVD) growth process. Type IIa