



**ELECTRONIC COPY**

LG731538291  
Report verification at igi.org



September 3, 2025

IGI Report Number **LG731538291**

Description **LABORATORY GROWN DIAMOND**

Shape and Cutting Style **OLD EUROPEAN CUT**

Measurements **8.58 - 8.62 X 5.21 MM**

**GRADING RESULTS**

Carat Weight **2.65 CARATS**

Color Grade **FANCY VIVID GREEN**

Clarity Grade **VVS 2**

September 3, 2025  
IGI Report Number **LG731538291**  
Description **LABORATORY GROWN DIAMOND**  
Shape and Cutting Style **OLD EUROPEAN CUT**  
Measurements **8.58 - 8.62 X 5.21 MM**

**GRADING RESULTS**

Carat Weight **2.65 CARATS**

Color Grade **FANCY VIVID GREEN**

Clarity Grade **VVS 2**

**ADDITIONAL GRADING INFORMATION**

Polish **EXCELLENT**

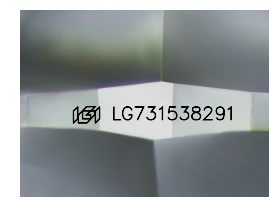
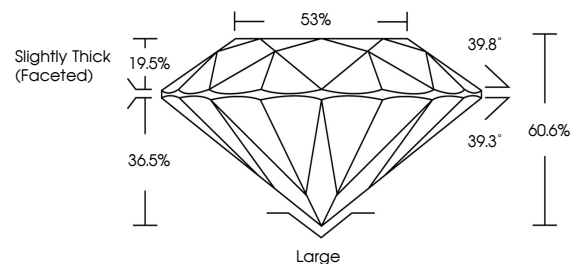
Symmetry **EXCELLENT**

Fluorescence **NONE**

Inscription(s) **IGI LG731538291**

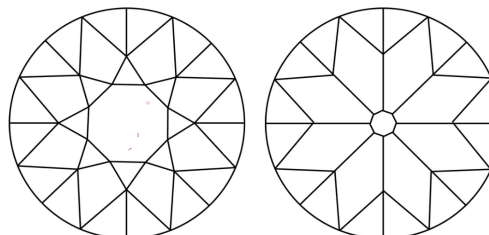
Comments: This Laboratory Grown Diamond was created by Chemical Vapor Deposition (CVD) growth process.  
Indications of post-growth treatment.

**PROPORTIONS**



Sample Image Used

**CLARITY CHARACTERISTICS**



**KEY TO SYMBOLS**

Red symbols indicate internal characteristics.  
Green symbols indicate external characteristics.

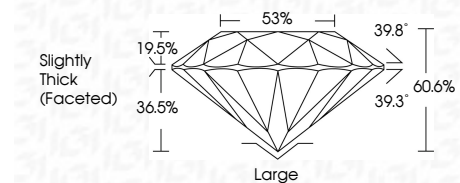
**COLOR**

D E F G H I J Faint Very Light Light

**CLARITY**

IF WS<sup>1-2</sup> VS<sup>1-2</sup> SI<sup>1-2</sup> I<sup>1-3</sup>

Internally Flawless Very Very Slightly Included Very Slightly Included Slightly Included Included



**ADDITIONAL GRADING INFORMATION**

Polish **EXCELLENT**

Symmetry **EXCELLENT**

Fluorescence **NONE**

Inscription(s) **IGI LG731538291**

Comments: This Laboratory Grown Diamond was created by Chemical Vapor Deposition (CVD) growth process.  
Indications of post-growth treatment.



September 3, 2025	2.65 CARATS	Large
IGI Report No LG731538291	FANCY VIVID GREEN	EXCELLENT
OLD EUROPEAN CUT	VVS 2	EXCELLENT
8.58 - 8.62 X 5.21 MM	60.6%	NONE
Carat Weight	53%	IGI LG731538291
Color Grade	Slightly Thick (Faceted)	
Clarity Grade		
Depth		
Table		
Grailes		
Culet		
Polish		
Symmetry		
Fluorescence		
Inscription(s)		

Comments: This Laboratory Grown Diamond was created by Chemical Vapor Deposition (CVD) growth process.  
Indications of post-growth treatment.