



**ELECTRONIC COPY**

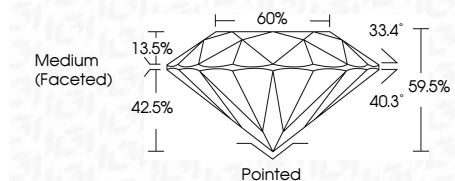
LG731538207  
Report verification at igi.org



August 30, 2025  
IGI Report Number **LG731538207**  
Description **LABORATORY GROWN DIAMOND**  
Shape and Cutting Style **ROUND BRILLIANT**  
Measurements **8.16 - 8.19 X 4.86 MM**

**GRADING RESULTS**

Carat Weight **2.00 CARATS**  
Color Grade **G**  
Clarity Grade **VS 2**  
Cut Grade **IDEAL**

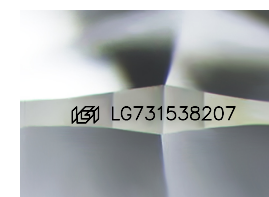


**ADDITIONAL GRADING INFORMATION**

Polish **EXCELLENT**  
Symmetry **EXCELLENT**  
Fluorescence **NONE**  
Inscription(s) **IGI LG731538207**  
Comments: This Laboratory Grown Diamond was created by Chemical Vapor Deposition (CVD) growth process. Type IIa

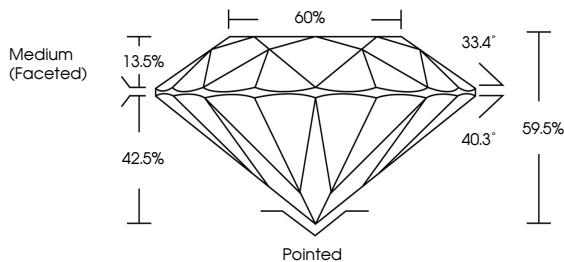


August 30, 2025  
IGI Report No LG731538207  
**ROUND BRILLIANT**  
8.16 - 8.19 X 4.86 MM  
2.00 CARATS  
Color Grade **G**  
Clarity Grade **VS 2**  
Cut Grade **IDEAL**  
Depth **59.5%**  
Table **60%**  
Girdle **Medium (Faceted)**  
Culet **Pointed**  
Polish **EXCELLENT**  
Symmetry **EXCELLENT**  
Fluorescence **NONE**  
Inscription(s) **IGI LG731538207**  
Comments: This Laboratory Grown Diamond was created by Chemical Vapor Deposition (CVD) growth process. Type IIa

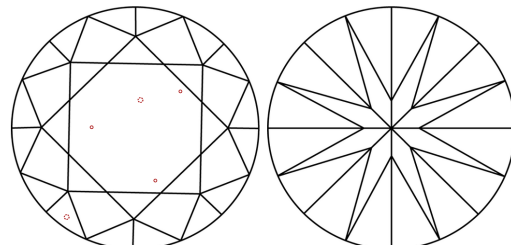


Sample Image Used

**PROPORTIONS**



**CLARITY CHARACTERISTICS**



**KEY TO SYMBOLS**

Red symbols indicate internal characteristics.  
Green symbols indicate external characteristics.

**COLOR**

D	E	F	G	H	I	J	Faint	Very Light	Light
---	---	---	---	---	---	---	-------	------------	-------

**CLARITY**

IF	WS <sup>1-2</sup>	VS <sup>1-2</sup>	SI <sup>1-2</sup>	I <sup>1-3</sup>
Internally Flawless	Very Very Slightly Included	Very Slightly Included	Slightly Included	Included

