



ELECTRONIC COPY

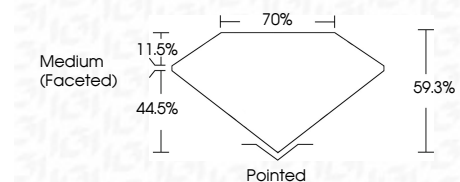
LG731534343
Report verification at igi.org



August 29, 2025
IGI Report Number **LG731534343**
Description **LABORATORY GROWN DIAMOND**
Shape and Cutting Style **ROUND MODIFIED BRILLIANT**
Measurements **7.86 - 7.86 X 4.66 MM**

GRADING RESULTS

Carat Weight **2.02 CARATS**
Color Grade **E**
Clarity Grade **VS 1**



ADDITIONAL GRADING INFORMATION

Polish **EXCELLENT**
Symmetry **EXCELLENT**
Fluorescence **NONE**
Inscription(s) **IGI LG731534343**
Comments: This Laboratory Grown Diamond was created by Chemical Vapor Deposition (CVD) growth process. Type IIa



August 29, 2025
IGI Report No LG731534343
ROUND MODIFIED BRILLIANT
7.86 - 7.86 X 4.66 MM
2.02 CARATS
E
VS 1
59.3%
70%
Medium (Faceted)
Pointed
EXCELLENT
EXCELLENT
NONE
IGI LG731534343
Inscription(s)
Comments: This Laboratory Grown Diamond was created by Chemical Vapor Deposition (CVD) growth process. Type IIa

August 29, 2025
IGI Report Number **LG731534343**
Description **LABORATORY GROWN DIAMOND**
Shape and Cutting Style **ROUND MODIFIED BRILLIANT**
Measurements **7.86 - 7.86 X 4.66 MM**

GRADING RESULTS

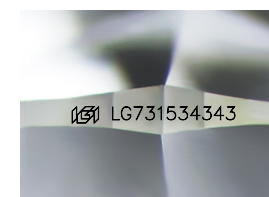
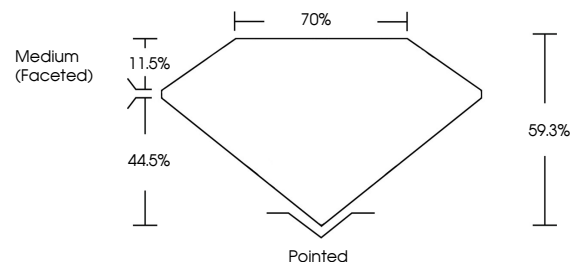
Carat Weight **2.02 CARATS**
Color Grade **E**
Clarity Grade **VS 1**

ADDITIONAL GRADING INFORMATION

Polish **EXCELLENT**
Symmetry **EXCELLENT**
Fluorescence **NONE**
Inscription(s) **IGI LG731534343**

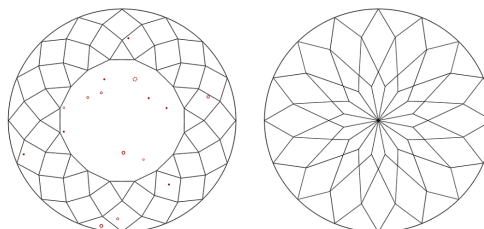
Comments: This Laboratory Grown Diamond was created by Chemical Vapor Deposition (CVD) growth process. Type IIa

PROPORTIONS



Sample Image Used

CLARITY CHARACTERISTICS



KEY TO SYMBOLS

Red symbols indicate internal characteristics.
Green symbols indicate external characteristics.

COLOR

D E F G H I J Faint Very Light Light

CLARITY

IF	VS ¹⁻²	VS ¹⁻²	SI ¹⁻²	I ¹⁻³
Internally Flawless	Very Very Slightly Included	Very Slightly Included	Slightly Included	Included

