



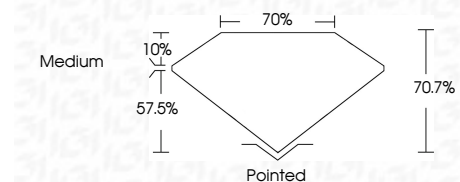
ELECTRONIC COPY

LG731534273
Report verification at igi.org



August 28, 2025
IGI Report Number **LG731534273**
Description **LABORATORY GROWN DIAMOND**
Shape and Cutting Style **PRINCESS CUT**
Measurements **9.47 X 9.31 X 6.58 MM**

GRADING RESULTS
Carat Weight **5.02 CARATS**
Color Grade **E**
Clarity Grade **SI 1**



ADDITIONAL GRADING INFORMATION
Polish **EXCELLENT**
Symmetry **EXCELLENT**
Fluorescence **NONE**
Inscription(s) **IGI LG731534273**
Comments: This Laboratory Grown Diamond was created by Chemical Vapor Deposition (CVD) growth process. Type IIa



August 28, 2025
IGI Report No LG731534273
PRINCESS CUT
5.02 CARATS
E
9.47 X 9.31 X 6.58 MM
Color Grade
SI 1
Depth 70.7%
Table 57.5%
Girdle Medium
Pointed
EXCELLENT
EXCELLENT
NONE
IGI LG731534273
Comments: This Laboratory Grown Diamond was created by Chemical Vapor Deposition (CVD) growth process. Type IIa

LABORATORY GROWN DIAMOND REPORT

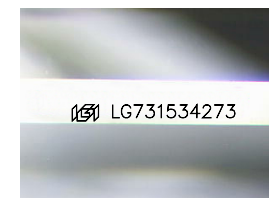
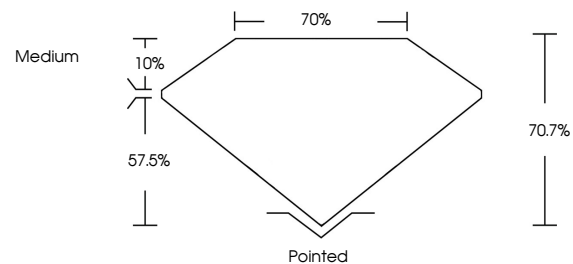
August 28, 2025
IGI Report Number **LG731534273**
Description **LABORATORY GROWN DIAMOND**
Shape and Cutting Style **PRINCESS CUT**
Measurements **9.47 X 9.31 X 6.58 MM**

GRADING RESULTS
Carat Weight **5.02 CARATS**
Color Grade **E**
Clarity Grade **SI 1**

ADDITIONAL GRADING INFORMATION
Polish **EXCELLENT**
Symmetry **EXCELLENT**
Fluorescence **NONE**
Inscription(s) **IGI LG731534273**

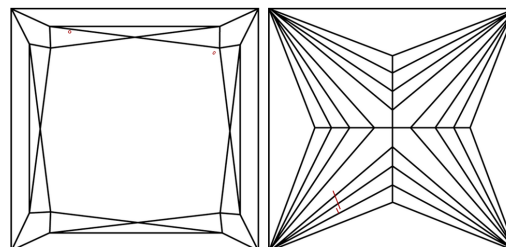
Comments: This Laboratory Grown Diamond was created by Chemical Vapor Deposition (CVD) growth process. Type IIa

PROPORTIONS



Sample Image Used

CLARITY CHARACTERISTICS



KEY TO SYMBOLS

Red symbols indicate internal characteristics.
Green symbols indicate external characteristics.

COLOR

D E F G H I J Faint Very Light Light

CLARITY

| | | | | |
|---------------------|-----------------------------|------------------------|-------------------|------------------|
| IF | VS ¹⁻² | VS ¹⁻² | SI ¹⁻² | I ¹⁻³ |
| Internally Flawless | Very Very Slightly Included | Very Slightly Included | Slightly Included | Included |

