



# INTERNATIONAL GEMOLOGICAL INSTITUTE

ELECTRONIC COPY

## LABORATORY GROWN DIAMOND REPORT

September 3, 2025

IGI Report Number

LG731531447

Description

LABORATORY GROWN DIAMOND

Shape and Cutting Style

ROUND BRILLIANT

Measurements

5.76 - 5.78 X 3.54 MM

### GRADING RESULTS

Carat Weight

0.73 CARAT

Color Grade

G

Clarity Grade

VVS 2

Cut Grade

EXCELLENT

### ADDITIONAL GRADING INFORMATION

Polish

EXCELLENT

Symmetry

VERY GOOD

Fluorescence

NONE

Inscription(s)

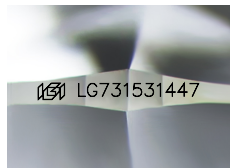
IGI LG731531447

Comments: As Grown - No indication of post-growth treatment.

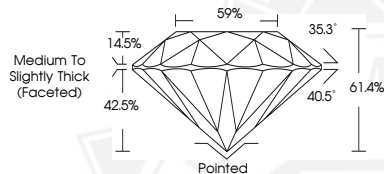
This Laboratory Grown Diamond was created by High Pressure High Temperature (HPHT) growth process.

Type II

Faint Blue



Sample Image Used



September 3, 2025

IGI Report Number LG731531447

ROUND BRILLIANT

LABORATORY GROWN DIAMOND

5.76 - 5.78 X 3.54 MM

Carat Weight 0.73 CARAT

Color Grade G

Clarity Grade VVS 2

Cut Grade EXCELLENT

Polish EXCELLENT

Symmetry VERY GOOD

Fluorescence NONE

Inscription(s) IGI LG731531447

Comments: As Grown - No indication of post-growth treatment. This Laboratory Grown Diamond was created by High Pressure High Temperature (HPHT) growth process. Type II Faint Blue



September 3, 2025

IGI Report Number LG731531447

ROUND BRILLIANT

LABORATORY GROWN DIAMOND

5.76 - 5.78 X 3.54 MM

Carat Weight 0.73 CARAT

Color Grade G

Clarity Grade VVS 2

Cut Grade EXCELLENT

Polish EXCELLENT

Symmetry VERY GOOD

Fluorescence NONE

Inscription(s) IGI LG731531447

Comments: As Grown - No indication of post-growth treatment. This Laboratory Grown Diamond was created by High Pressure High Temperature (HPHT) growth process. Type II Faint Blue



THIS DOCUMENT WAS PRODUCED WITH THE FOLLOWING SECURITY MEASURES: SPECIAL DOCUMENT PAPER, INK SCREENS, WATERMARK, BACKGROUND DESIGNS, HOLOGRAM AND OTHER SECURITY FEATURES NOT LISTED AND DO EXCEED DOCUMENT SECURITY INDUSTRY GUIDELINES.

For terms & conditions and to verify this report, please visit [www.igi.org](http://www.igi.org)