



ELECTRONIC COPY

LG731531368
Report verification at igi.org



September 4, 2025
IGI Report Number **LG731531368**
Description **LABORATORY GROWN DIAMOND**
Shape and Cutting Style **OLD EUROPEAN CUT**
Measurements **6.28 - 6.32 X 3.87 MM**
GRADING RESULTS
Carat Weight **1.03 CARAT**
Color Grade **FANCY INTENSE GREEN**
Clarity Grade **VS 1**

September 4, 2025
IGI Report Number **LG731531368**
Description **LABORATORY GROWN DIAMOND**
Shape and Cutting Style **OLD EUROPEAN CUT**
Measurements **6.28 - 6.32 X 3.87 MM**

GRADING RESULTS

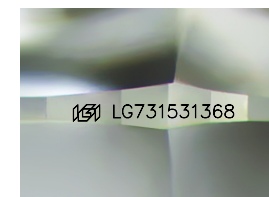
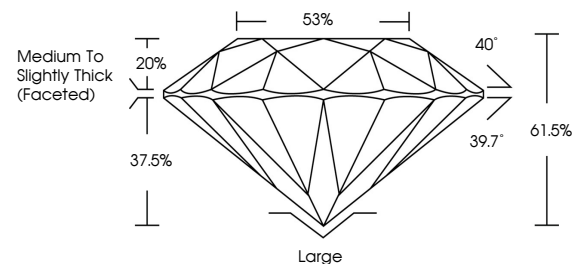
Carat Weight **1.03 CARAT**
Color Grade **FANCY INTENSE GREEN**
Clarity Grade **VS 1**

ADDITIONAL GRADING INFORMATION

Polish **EXCELLENT**
Symmetry **EXCELLENT**
Fluorescence **VERY SLIGHT**
Inscription(s) **IGI LG731531368**

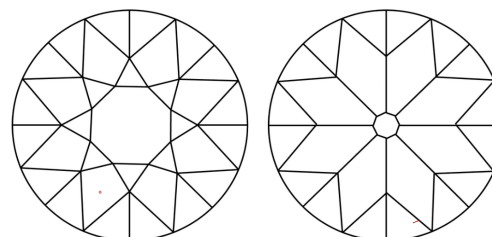
Comments: This Laboratory Grown Diamond was created by Chemical Vapor Deposition (CVD) growth process.
Indications of post-growth treatment.

PROPORTIONS



Sample Image Used

CLARITY CHARACTERISTICS



KEY TO SYMBOLS

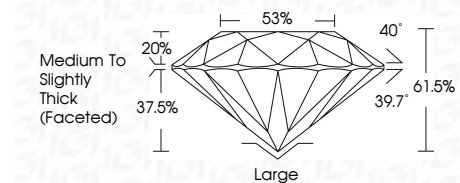
Red symbols indicate internal characteristics.
Green symbols indicate external characteristics.

COLOR

D E F G H I J Faint Very Light Light

CLARITY

IF	VS ¹⁻²	VS ¹⁻²	SI ¹⁻²	I ¹⁻³
Internally Flawless	Very Very Slightly Included	Very Slightly Included	Slightly Included	Included



ADDITIONAL GRADING INFORMATION

Polish **EXCELLENT**
Symmetry **EXCELLENT**
Fluorescence **VERY SLIGHT**
Inscription(s) **IGI LG731531368**
Comments: This Laboratory Grown Diamond was created by Chemical Vapor Deposition (CVD) growth process.
Indications of post-growth treatment.



September 4, 2025
IGI Report No LG731531368
OLD EUROPEAN CUT
6.28 - 6.32 X 3.87 MM
1.03 CARAT
FANCY INTENSE GREEN
VS 1
61.5%
85%
Medium to Slightly Thick (Faceted)
Large
EXCELLENT
EXCELLENT
VERY SLIGHT
IGI LG731531368
Comments: This Laboratory Grown Diamond was created by Chemical Vapor Deposition (CVD) growth process.
Indications of post-growth treatment.