



**ELECTRONIC COPY**

## LABORATORY GROWN DIAMOND REPORT

September 4, 2025	
IGI Report Number	LG731527663
Description	LABORATORY GROWN DIAMOND
Shape and Cutting Style	ROUND BRILLIANT
Measurements	7.47 - 7.50 X 4.37 MM

## GRADING RESULTS

Carat Weight	1.50 CARAT
Color Grade	E
Clarity Grade	VVS 2
Cut Grade	EXCELLENT

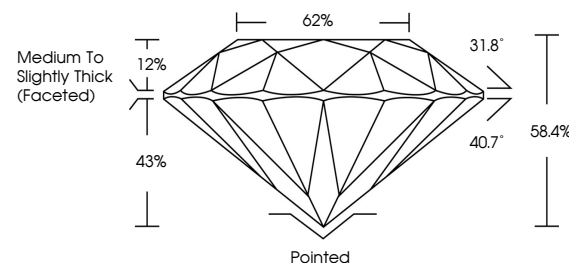
### ADDITIONAL GRADING INFORMATION

Polish	EXCELLENT
Symmetry	VERY GOOD
Fluorescence	NONE
Inscription(s)	151 LG731527663

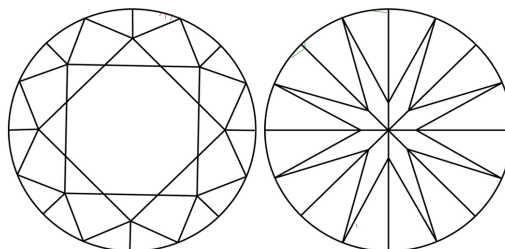
Comments: As Grown - No indication of post-growth treatment.  
This Laboratory Grown Diamond was created by High Pressure High Temperature (HPHT) growth process.  
Type II

LG731527663  
Report verification at [lgi.org](https://lgi.org)

## PROPORTIONS

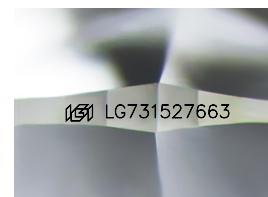


## CLARITY CHARACTERISTICS



## KEY TO SYMBOLS

Red symbols indicate internal characteristics.  
Green symbols indicate external characteristics.



Sample Image Used

## COLOR

D E F G H I J Faint Very Light Light

## CLARITY

IF      WS<sup>1-2</sup>      VS<sup>1-2</sup>      S<sup>1-2</sup>      |<sup>1-3</sup>

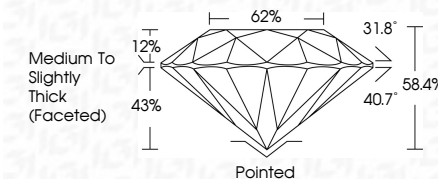
Internally Flawless	Very Very Slightly Included	Very Slightly Included	Slightly Included	Included
------------------------	--------------------------------	---------------------------	----------------------	----------



September 4, 2025	
IGI Report Number	LG731527663
Description	LABORATORY GROWN DIAMOND
Shape and Cutting Style	ROUND BRILLIANT
Measurements	7.47 - 7.50 X 4.37 MM

## GRADING RESULTS

Carat Weight	1.50 CARAT
Color Grade	E
Clarity Grade	VVS 2
Cut Grade	EXCELLENT



### ADDITIONAL GRADING INFORMATION

Polish	EXCELLENT
Symmetry	VERY GOOD
Fluorescence	NONE
Inscription(s)	<del>151</del> LG731527663
Comments: As Grown - No indication of post-growth treatment.	
This Laboratory Grown Diamond was created by High Pressure High Temperature (HPHT) growth process.	
Type II	



© IGI 2020, International Gemological Institute

FD - 10 20



THIS DOCUMENT WAS PRODUCED WITH THE FOLLOWING SECURITY MEASURES: SPECIAL DOCUMENT PAPER, INK SCREENS, WATERMARK, BACKGROUND DESIGNS, HOLOGRAM AND OTHER SECURITY FEATURES NOT LISTED AND DO EXCEED DOCUMENT SECURITY INDUSTRY GUIDELINES

**www.igi.org**

September 4, 2025  
IGI Report No LG731527663  
ROUND BRILLIANT

<b>7.47 - 7.50 X 4.37 MM</b>	<b>1.50 CARAT</b>
Carat Weight	<b>E</b>
Color Grade	<b>VVS 2</b>
Clarity Grade	<b>EXCELLENT</b>
Cut Grade	<b>88.4%</b>
Depth	<b>62%</b>
Table	<b>Medium To Slightly Thick (faceted)</b>
Girdle	<b>Pointed</b>
Culet	<b>EXCELLENT</b>
Polish	<b>VERY GOOD</b>
Symmetry	<b>NONE</b>
Fluorescence	

1991/15/73/1527/683  
incription(s)