



ELECTRONIC COPY

LG731527477
Report verification at igi.org



September 1, 2025
IGI Report Number **LG731527477**
Description **LABORATORY GROWN DIAMOND**
Shape and Cutting Style **SQUARE CUSHION MODIFIED BRILLIANT**
Measurements **8.41 X 8.30 X 5.53 MM**
GRADING RESULTS
Carat Weight **3.01 CARATS**
Color Grade **FANCY VIVID PINK**
Clarity Grade **SI 1**

LABORATORY GROWN DIAMOND REPORT

September 1, 2025
IGI Report Number **LG731527477**
Description **LABORATORY GROWN DIAMOND**
Shape and Cutting Style **SQUARE CUSHION MODIFIED BRILLIANT**
Measurements **8.41 X 8.30 X 5.53 MM**

GRADING RESULTS

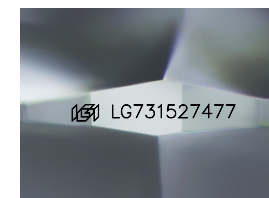
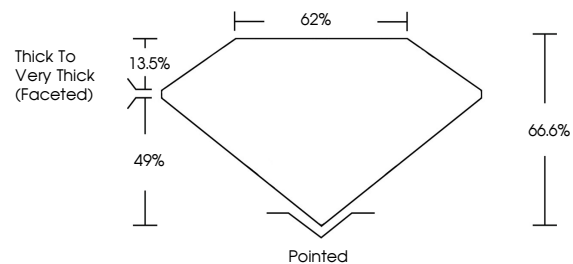
Carat Weight **3.01 CARATS**
Color Grade **FANCY VIVID PINK**
Clarity Grade **SI 1**

ADDITIONAL GRADING INFORMATION

Polish **VERY GOOD**
Symmetry **EXCELLENT**
Fluorescence **STRONG**
Inscription(s) **IGI LG731527477**

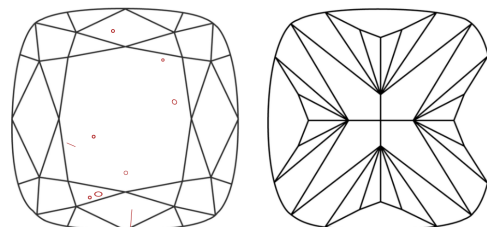
Comments: This Laboratory Grown Diamond was created by Chemical Vapor Deposition (CVD) growth process. Indications of post-growth treatment.

PROPORTIONS



Sample Image Used

CLARITY CHARACTERISTICS



KEY TO SYMBOLS

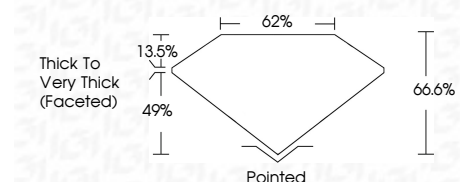
Red symbols indicate internal characteristics.
Green symbols indicate external characteristics.

COLOR

D E F G H I J Faint Very Light Light

CLARITY

IF	VS ¹⁻²	VS ¹⁻²	SI ¹⁻²	I ¹⁻³
Internally Flawless	Very Very Slightly Included	Very Slightly Included	Slightly Included	Included



ADDITIONAL GRADING INFORMATION

Polish **VERY GOOD**
Symmetry **EXCELLENT**
Fluorescence **STRONG**
Inscription(s) **IGI LG731527477**
Comments: This Laboratory Grown Diamond was created by Chemical Vapor Deposition (CVD) growth process. Indications of post-growth treatment.



September 1, 2025
IGI Report No LG731527477
SQUARE CUSHION MODIFIED BRILLIANT
8.41 X 8.30 X 5.53 MM
3.01 CARATS
FANCY VIVID PINK
SI 1
66.6%
49%
Thick to Very Thick (Faceted)
Pointed
VERY GOOD
EXCELLENT
STRONG
IGI LG731527477
Comments: This Laboratory Grown Diamond was created by Chemical Vapor Deposition (CVD) growth process. Indications of post-growth treatment.