



ELECTRONIC COPY

LG731523275
Report verification at igi.org



August 28, 2025

IGI Report Number **LG731523275**

Description **LABORATORY GROWN DIAMOND**

Shape and Cutting Style **PRINCESS CUT**

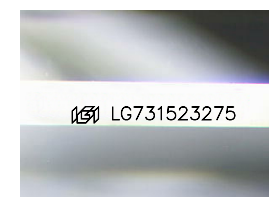
Measurements **9.55 X 9.45 X 6.50 MM**

GRADING RESULTS

Carat Weight **5.09 CARATS**

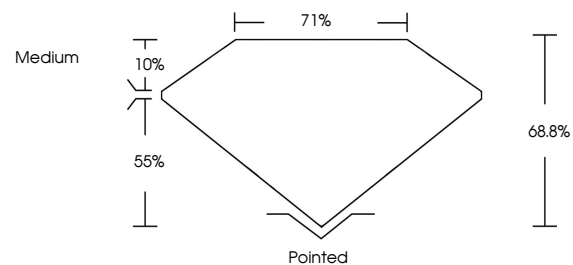
Color Grade **E**

Clarity Grade **VVS 2**

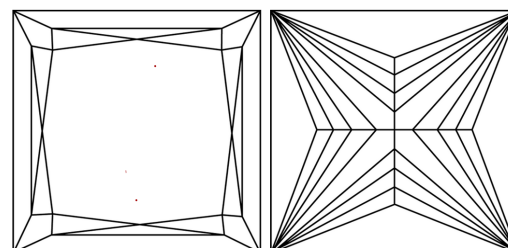


Sample Image Used

PROPORTIONS



CLARITY CHARACTERISTICS



KEY TO SYMBOLS

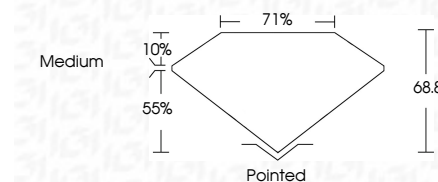
Red symbols indicate internal characteristics.
Green symbols indicate external characteristics.

COLOR

D E F G H I J Faint Very Light Light

CLARITY

IF	VS ¹⁻²	VS ¹⁻²	SI ¹⁻²	I ¹⁻³
Internally Flawless	Very Very Slightly Included	Very Slightly Included	Slightly Included	Included



ADDITIONAL GRADING INFORMATION

Polish **EXCELLENT**

Symmetry **EXCELLENT**

Fluorescence **NONE**

Inscription(s) **IGI LG731523275**

Comments: This Laboratory Grown Diamond was created by Chemical Vapor Deposition (CVD) growth process.
Type IIa



IGI



August 28, 2025
IGI Report No LG731523275
PRINCESS CUT

5.09 CARATS
E

9.55 X 9.45 X 6.50 MM
Carat Weight
Color Grade
Clarity Grade
Depth
Table
Girdle
Medium

10%
55%
71%
68.8%

Pointed
EXCELLENT
EXCELLENT
NONE
IGI LG731523275

Comments: This Laboratory Grown Diamond was created by Chemical Vapor Deposition (CVD) growth process.
Type IIa