



ELECTRONIC COPY

LG731522056
Report verification at igi.org



September 2, 2025

IGI Report Number **LG731522056**

Description **LABORATORY GROWN DIAMOND**

Shape and Cutting Style **OLD EUROPEAN CUT**

Measurements **8.14 - 8.17 X 5.09 MM**

GRADING RESULTS

Carat Weight **2.30 CARATS**

Color Grade **FANCY VIVID GREEN**

Clarity Grade **VS 1**

September 2, 2025
IGI Report Number **LG731522056**
Description **LABORATORY GROWN DIAMOND**
Shape and Cutting Style **OLD EUROPEAN CUT**
Measurements **8.14 - 8.17 X 5.09 MM**

GRADING RESULTS

Carat Weight **2.30 CARATS**

Color Grade **FANCY VIVID GREEN**

Clarity Grade **VS 1**

ADDITIONAL GRADING INFORMATION

Polish **EXCELLENT**

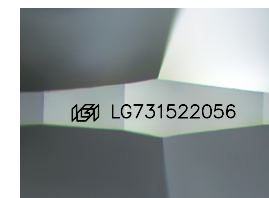
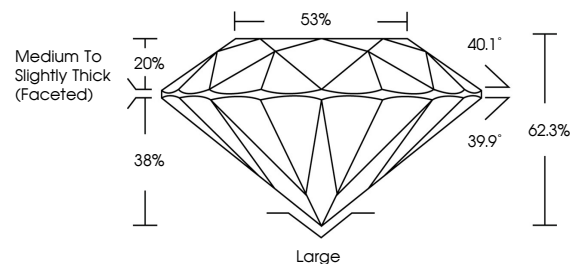
Symmetry **EXCELLENT**

Fluorescence **NONE**

Inscription(s) **IGI LG731522056**

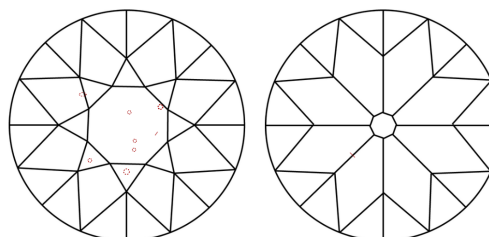
Comments: This Laboratory Grown Diamond was created by Chemical Vapor Deposition (CVD) growth process. Indications of post-growth treatment.

PROPORTIONS



Sample Image Used

CLARITY CHARACTERISTICS



KEY TO SYMBOLS

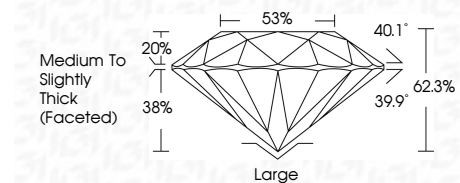
Red symbols indicate internal characteristics.
Green symbols indicate external characteristics.

COLOR

D E F G H I J Faint Very Light Light

CLARITY

IF	VS ¹⁻²	VS ¹⁻²	SI ¹⁻²	I ¹⁻³
Internally Flawless	Very Very Slightly Included	Very Slightly Included	Slightly Included	Included



ADDITIONAL GRADING INFORMATION

Polish **EXCELLENT**

Symmetry **EXCELLENT**

Fluorescence **NONE**

Inscription(s) **IGI LG731522056**

Comments: This Laboratory Grown Diamond was created by Chemical Vapor Deposition (CVD) growth process. Indications of post-growth treatment.



September 2, 2025
IGI Report No LG731522056
OLD EUROPEAN CUT
8.14 - 8.17 X 5.09 MM
Carat Weight **2.30 CARATS**
Color Grade **FANCY VIVID GREEN**
Clarity Grade **VS 1**
Depth **62.3%**
Table **85%**
Girdle **Medium to Slightly Thick (Faceted)**
Culet **Large**
Polish **EXCELLENT**
Symmetry **EXCELLENT**
Fluorescence **NONE**
Inscription(s) **IGI LG731522056**
Comments: This Laboratory Grown Diamond was created by Chemical Vapor Deposition (CVD) growth process. Indications of post-growth treatment.