



**ELECTRONIC COPY**

LG731521973  
Report verification at igi.org



August 28, 2025

IGI Report Number **LG731521973**

Description **LABORATORY GROWN DIAMOND**

Shape and Cutting Style **PRINCESS CUT**

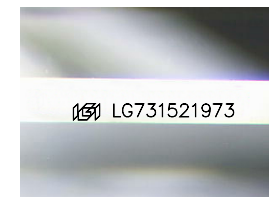
Measurements **9.97 X 9.92 X 6.76 MM**

**GRADING RESULTS**

Carat Weight **5.87 CARATS**

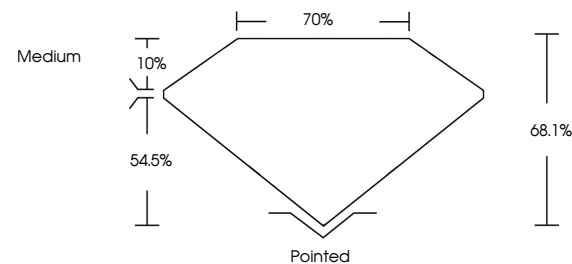
Color Grade **E**

Clarity Grade **VVS 2**

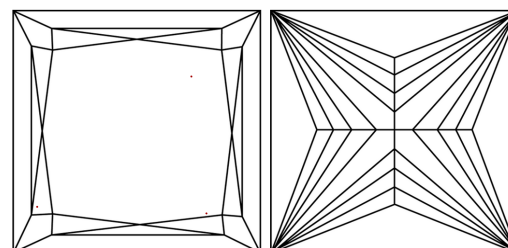


Sample Image Used

**PROPORTIONS**



**CLARITY CHARACTERISTICS**



**KEY TO SYMBOLS**

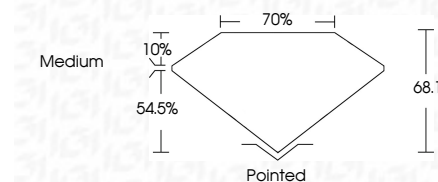
Red symbols indicate internal characteristics.  
Green symbols indicate external characteristics.

**COLOR**

D E F G H I J Faint Very Light Light

**CLARITY**

IF	VS <sup>1-2</sup>	VS <sup>1-2</sup>	SI <sup>1-2</sup>	I <sup>1-3</sup>
Internally Flawless	Very Very Slightly Included	Very Slightly Included	Slightly Included	Included



**ADDITIONAL GRADING INFORMATION**

Polish **EXCELLENT**

Symmetry **EXCELLENT**

Fluorescence **NONE**

Inscription(s) **IGI LG731521973**

Comments: This Laboratory Grown Diamond was created by Chemical Vapor Deposition (CVD) growth process.  
Type IIa



**IGI**



August 28, 2025  
IGI Report No LG731521973  
PRINCESS CUT

5.87 CARATS  
E

9.97 X 9.92 X 6.76 MM  
VVS 2  
54.5%  
10%  
70%  
Medium

Pointed  
EXCELLENT  
EXCELLENT  
NONE  
IGI LG731521973

Comments: This Laboratory Grown Diamond was created by Chemical Vapor Deposition (CVD) growth process.  
Type IIa