



ELECTRONIC COPY

LG731520393
Report verification at igi.org



September 10, 2025
IGI Report Number **LG731520393**
Description **LABORATORY GROWN DIAMOND**
Shape and Cutting Style **SQUARE CUSHION MODIFIED BRILLIANT**
Measurements **5.66 X 5.60 X 3.82 MM**
GRADING RESULTS
Carat Weight **1.09 CARAT**
Color Grade **S-T**
Clarity Grade **VVS 2**

LABORATORY GROWN DIAMOND REPORT

September 10, 2025
IGI Report Number **LG731520393**
Description **LABORATORY GROWN DIAMOND**
Shape and Cutting Style **SQUARE CUSHION MODIFIED BRILLIANT**
Measurements **5.66 X 5.60 X 3.82 MM**

GRADING RESULTS

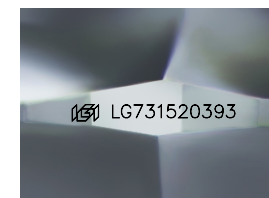
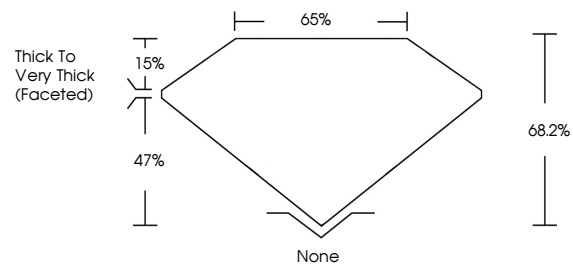
Carat Weight **1.09 CARAT**
Color Grade **S-T**
Clarity Grade **VVS 2**

ADDITIONAL GRADING INFORMATION

Polish **EXCELLENT**
Symmetry **EXCELLENT**
Fluorescence **NONE**
Inscription(s) **IGI LG731520393**

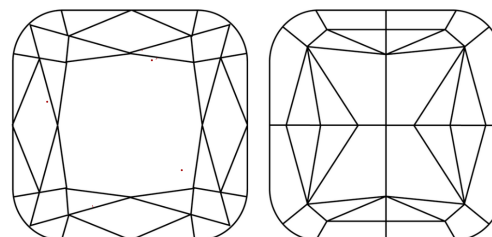
Comments: This Laboratory Grown Diamond was created by Chemical Vapor Deposition (CVD) growth process.
Type IIa

PROPORTIONS



Sample Image Used

CLARITY CHARACTERISTICS



KEY TO SYMBOLS

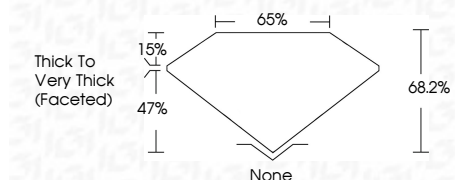
Red symbols indicate internal characteristics.
Green symbols indicate external characteristics.

COLOR

D E F G H I J Faint Very Light Light

CLARITY

IF	VS ¹⁻²	VS ¹⁻²	SI ¹⁻²	I ¹⁻³
Internally Flawless	Very Very Slightly Included	Very Slightly Included	Slightly Included	Included



ADDITIONAL GRADING INFORMATION

Polish **EXCELLENT**
Symmetry **EXCELLENT**
Fluorescence **NONE**
Inscription(s) **IGI LG731520393**
Comments: This Laboratory Grown Diamond was created by Chemical Vapor Deposition (CVD) growth process.
Type IIa



IGI



September 10, 2025
IGI Report No LG731520393
SQUARE CUSHION MODIFIED BRILLIANT
5.66 X 5.60 X 3.82 MM
1.09 CARAT S-T
VVS 2
68.2%
65%
Thick to Very Thick (Faceted)
None
EXCELLENT
EXCELLENT
NONE
IGI LG731520393
Comments: This Laboratory Grown Diamond was created by Chemical Vapor Deposition (CVD) growth process.
Type IIa