



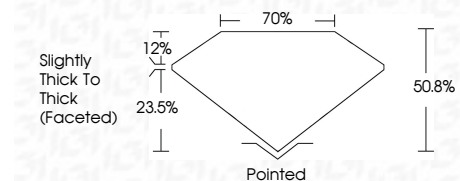
ELECTRONIC COPY

LG731518369
Report verification at igi.org



September 5, 2025
IGI Report Number **LG731518369**
Description **LABORATORY GROWN DIAMOND**
Shape and Cutting Style **HEART MODIFIED BRILLIANT**
Measurements **6.20 X 7.74 X 3.93 MM**

GRADING RESULTS
Carat Weight **1.42 CARAT**
Color Grade **FANCY VIVID PINK**
Clarity Grade **VS 1**



ADDITIONAL GRADING INFORMATION
Polish **EXCELLENT**
Symmetry **VERY GOOD**
Fluorescence **STRONG**
Inscription(s) **IGI LG731518369**
Comments: This Laboratory Grown Diamond was created by Chemical Vapor Deposition (CVD) growth process. Indications of post-growth treatment.



September 5, 2025
IGI Report No LG731518369
HEART MODIFIED BRILLIANT
6.20 X 7.74 X 3.93 MM
1.42 CARAT
FANCY VIVID PINK
VS 1
60.6%
70%
Slightly Thick to Thick (Faceted)
Pointed
EXCELLENT
VERY GOOD
STRONG
IGI LG731518369
Comments: This Laboratory Grown Diamond was created by Chemical Vapor Deposition (CVD) growth process. Indications of post-growth treatment.

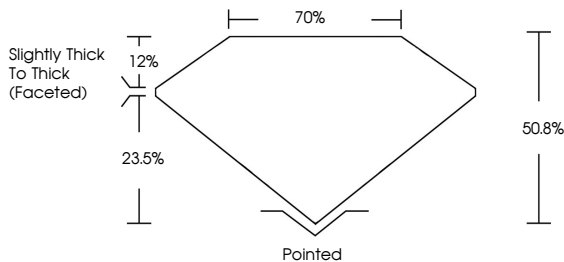
September 5, 2025
IGI Report Number **LG731518369**
Description **LABORATORY GROWN DIAMOND**
Shape and Cutting Style **HEART MODIFIED BRILLIANT**
Measurements **6.20 X 7.74 X 3.93 MM**

GRADING RESULTS
Carat Weight **1.42 CARAT**
Color Grade **FANCY VIVID PINK**
Clarity Grade **VS 1**

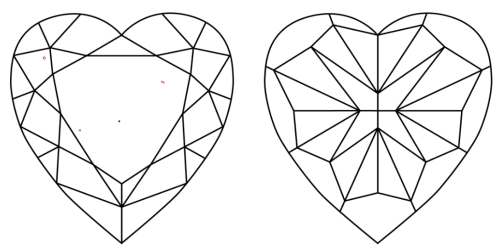
ADDITIONAL GRADING INFORMATION
Polish **EXCELLENT**
Symmetry **VERY GOOD**
Fluorescence **STRONG**
Inscription(s) **IGI LG731518369**

Comments: This Laboratory Grown Diamond was created by Chemical Vapor Deposition (CVD) growth process. Indications of post-growth treatment.

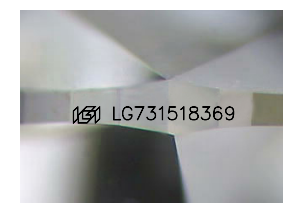
PROPORTIONS



CLARITY CHARACTERISTICS



KEY TO SYMBOLS
Red symbols indicate internal characteristics.
Green symbols indicate external characteristics.



Sample Image Used

COLOR

D	E	F	G	H	I	J	Faint	Very Light	Light
---	---	---	---	---	---	---	-------	------------	-------

CLARITY

IF	VS ¹⁻²	VS ¹⁻²	SI ¹⁻²	I ¹⁻³
Internally Flawless	Very Very Slightly Included	Very Slightly Included	Slightly Included	Included

