



ELECTRONIC COPY

LG731518130 Report verification at igi.org



August 30, 2025 IGI Report Number LG731518130 Description LABORATORY GROWN DIAMOND Shape and Cutting Style CUT CORNERED RECTANGULAR MODIFIED BRILLIANT Measurements 10.14 X 6.68 X 4.35 MM GRADING RESULTS Carat Weight 2.50 CARATS Color Grade F Clarity Grade VVS 2

August 30, 2025 IGI Report Number LG731518130 Description LABORATORY GROWN DIAMOND Shape and Cutting Style CUT CORNERED RECTANGULAR MODIFIED BRILLIANT Measurements 10.14 X 6.68 X 4.35 MM

GRADING RESULTS

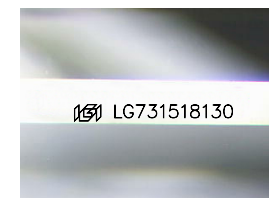
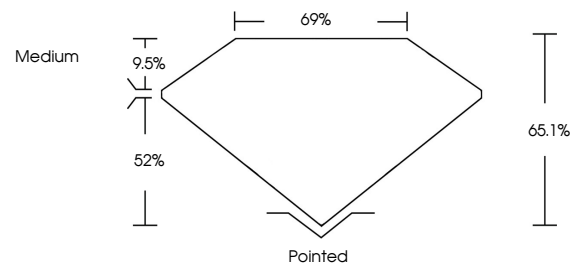
Carat Weight 2.50 CARATS Color Grade F Clarity Grade VVS 2

ADDITIONAL GRADING INFORMATION

Polish EXCELLENT Symmetry EXCELLENT Fluorescence NONE Inscription(s) IGI LG731518130

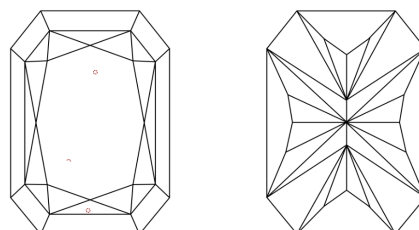
Comments: This Laboratory Grown Diamond was created by Chemical Vapor Deposition (CVD) growth process. Type IIa

PROPORTIONS



Sample Image Used

CLARITY CHARACTERISTICS



KEY TO SYMBOLS

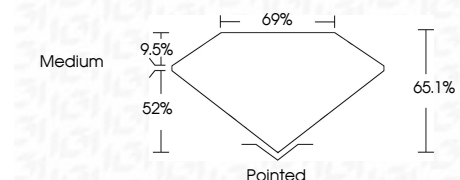
Red symbols indicate internal characteristics. Green symbols indicate external characteristics.

COLOR

D E F G H I J Faint Very Light Light

CLARITY

IF WS 1-2 VS 1-2 SI 1-2 I 1-3 Internally Flawless Very Very Slightly Included Very Slightly Included Slightly Included Included



ADDITIONAL GRADING INFORMATION

Polish EXCELLENT Symmetry EXCELLENT Fluorescence NONE Inscription(s) IGI LG731518130 Comments: This Laboratory Grown Diamond was created by Chemical Vapor Deposition (CVD) growth process. Type IIa



August 30, 2025 IGI Report No LG731518130 CUT CORNERED RECT. MODIFIED BRILLIANT 10.14 X 6.68 X 4.35 MM 2.50 CARATS F VVS 2 65.1% 69% Medium Pointed EXCELLENT EXCELLENT NONE IGI LG731518130 Comments: This Laboratory Grown Diamond was created by Chemical Vapor Deposition (CVD) growth process. Type IIa