



**ELECTRONIC COPY**

LG731509849  
Report verification at igi.org



September 1, 2025  
IGI Report Number **LG731509849**  
Description **LABORATORY GROWN DIAMOND**  
Shape and Cutting Style **CUSHION MODIFIED BRILLIANT**  
Measurements **12.15 X 8.87 X 5.90 MM**  
**GRADING RESULTS**  
Carat Weight **5.10 CARATS**  
Color Grade **FANCY VIVID PINK**  
Clarity Grade **VS 1**

**LABORATORY GROWN DIAMOND REPORT**

September 1, 2025  
IGI Report Number **LG731509849**  
Description **LABORATORY GROWN DIAMOND**  
Shape and Cutting Style **CUSHION MODIFIED BRILLIANT**  
Measurements **12.15 X 8.87 X 5.90 MM**

**GRADING RESULTS**

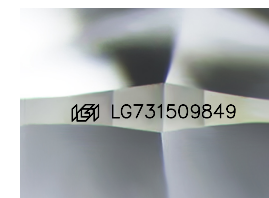
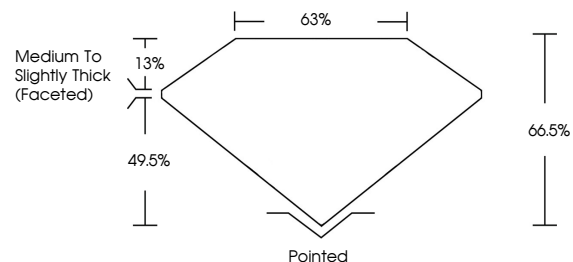
Carat Weight **5.10 CARATS**  
Color Grade **FANCY VIVID PINK**  
Clarity Grade **VS 1**

**ADDITIONAL GRADING INFORMATION**

Polish **VERY GOOD**  
Symmetry **VERY GOOD**  
Fluorescence **STRONG**  
Inscription(s) **LG731509849**

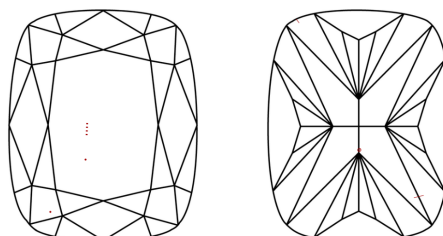
Comments: This Laboratory Grown Diamond was created by Chemical Vapor Deposition (CVD) growth process. Indications of post-growth treatment.

**PROPORTIONS**



Sample Image Used

**CLARITY CHARACTERISTICS**



**KEY TO SYMBOLS**

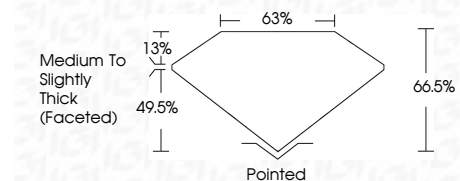
Red symbols indicate internal characteristics.  
Green symbols indicate external characteristics.

**COLOR**

D E F G H I J Faint Very Light Light

**CLARITY**

IF	VS <sup>1-2</sup>	VS <sup>1-2</sup>	SI <sup>1-2</sup>	I <sup>1-3</sup>
Internally Flawless	Very Very Slightly Included	Very Slightly Included	Slightly Included	Included



**ADDITIONAL GRADING INFORMATION**

Polish **VERY GOOD**  
Symmetry **VERY GOOD**  
Fluorescence **STRONG**  
Inscription(s) **LG731509849**  
Comments: This Laboratory Grown Diamond was created by Chemical Vapor Deposition (CVD) growth process. Indications of post-growth treatment.



September 1, 2025  
IGI Report No LG731509849  
**CUSHION MODIFIED BRILLIANT**  
12.15 X 8.87 X 5.90 MM  
5.10 CARATS  
FANCY VIVID PINK  
VS 1  
66.5%  
63%  
Medium to Slightly Thick (Faceted)  
Pointed  
VERY GOOD  
VERY GOOD  
STRONG  
Faint  
IGI LG731509849  
Comments: This Laboratory Grown Diamond was created by Chemical Vapor Deposition (CVD) growth process. Indications of post-growth treatment.