



ELECTRONIC COPY

LABORATORY GROWN DIAMOND REPORT

LG731509265
Report verification at igi.org

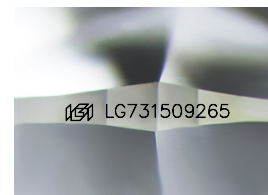
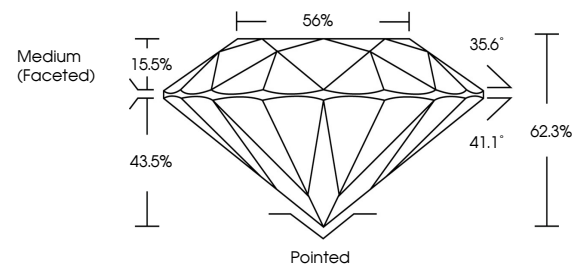
September 10, 2025	
IGI Report Number	LG731509265
Description	LABORATORY GROWN DIAMOND
Shape and Cutting Style	ROUND BRILLIANT
Measurements	7.63 - 7.67 X 4.76 MM
GRADING RESULTS	
Carat Weight	1.70 CARAT
Color Grade	D
Clarity Grade	VVS 2
Cut Grade	IDEAL

ADDITIONAL GRADING INFORMATION

Polish	EXCELLENT
Symmetry	EXCELLENT
Fluorescence	NONE
Inscription(s)	15 LG731509265

Comments: As Grown - No indication of post-growth treatment.
This Laboratory Grown Diamond was created by High Pressure High Temperature (HPHT) growth process.
Type II

PROPORTIONS



Sample Image Used

COLOR

D E F G H I J Faint Very Light Light

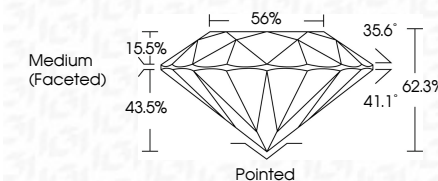
CLARITY

FL	IF	VVS ¹⁻²	VS ¹⁻²	SI ¹⁻²	I ¹⁻³
Flawless	Internally Flawless	Very Very Slightly Included	Very Slightly Included	Slightly Included	Included

LABORATORY GROWN DIAMOND REPORT



September 10, 2025	
IGI Report Number	LG731509265
Description	LABORATORY GROWN DIAMOND
Shape and Cutting Style	ROUND BRILLIANT
Measurements	7.63 - 7.67 X 4.76 MM
GRADING RESULTS	
Carat Weight	1.70 CARAT
Color Grade	D
Clarity Grade	VVS 2
Cut Grade	IDEAL



ADDITIONAL GRADING INFORMATION

Polish	EXCELLENT
Symmetry	EXCELLENT
Fluorescence	NONE
Inscription(s)	 LG731509265
Comments: As Grown - No indication of post-growth treatment.	
This Laboratory Grown Diamond was created by High Pressure High Temperature (HPHT) growth process.	
Type II	



© IGI 2020, International Gemological Institute

FD - 10 20



THIS DOCUMENT WAS PRODUCED WITH THE FOLLOWING SECURITY MEASURES: SPECIAL DOCUMENT PAPER, INK SCREENS, WATERMARK, BACKGROUND DESIGNS, HOLOGRAM AND OTHER SECURITY FEATURES NOT LISTED AND DO EXCEED DOCUMENT SECURITY INDUSTRY GUIDELINES

www.igi.org

September 10, 2025
ICI Report No LG731509265
ROUND BRILLIANT

7.63 - 7.67 X 4.76 MM

7.63 - 7.67 X 4.76 MM
Carat Weight **1.70 CARAT**

Color Grade	D
-------------	---

Clarity Grade	WS2
FL	
IF	
I1	
I2	
I3	
S1	
S2	
S3	
S4	
S5	
S6	
S7	
S8	
S9	
S10	
S11	
S12	
S13	
S14	
S15	
S16	
S17	
S18	
S19	
S20	
S21	
S22	
S23	
S24	
S25	
S26	
S27	
S28	
S29	
S30	
S31	
S32	
S33	
S34	
S35	
S36	
S37	
S38	
S39	
S40	
S41	
S42	
S43	
S44	
S45	
S46	
S47	
S48	
S49	
S50	
S51	
S52	
S53	
S54	
S55	
S56	
S57	
S58	
S59	
S60	
S61	
S62	
S63	
S64	
S65	
S66	
S67	
S68	
S69	
S70	
S71	
S72	
S73	
S74	
S75	
S76	
S77	
S78	
S79	
S80	
S81	
S82	
S83	
S84	
S85	
S86	
S87	
S88	
S89	
S90	
S91	
S92	
S93	
S94	
S95	
S96	
S97	
S98	
S99	
S100	

Cut Grade	IDEAL
Depth	62.3%

Depth	62.3%
Table	56%

Girdle	Medium (Faceted)

Culet	Pointed
-------	---------

Culet	Pointed
Polish	EXCELLENT

Symmetry	EXCELLENT
Eligibility	NONE

Fluorescence	NONE
Inscription(s)	151 LG731509265

Comments:

DESCRIPTION (3)

157 157 5 1007200

Comments:
As Grown - No Indication of post-growth

treatment.
This Laboratory Grown Diamond was
created by L'Oréal, Paris, France. L'Oréal

created by High Pressure High Temperature (HPHT) growth process.

Type II