



# INTERNATIONAL GEMOLOGICAL INSTITUTE

ELECTRONIC COPY

## LABORATORY GROWN DIAMOND REPORT

August 26, 2025

IGI Report Number

LG731504035

Description

LABORATORY GROWN DIAMOND

Shape and Cutting Style

ROUND BRILLIANT

Measurements

5.50 - 5.53 X 3.31 MM

### GRADING RESULTS

Carat Weight

0.62 CARAT

Color Grade

D

Clarity Grade

VVS 2

Cut Grade

EXCELLENT

### ADDITIONAL GRADING INFORMATION

Polish

EXCELLENT

Symmetry

EXCELLENT

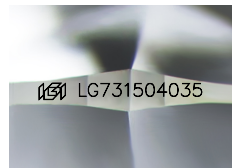
Fluorescence

NONE

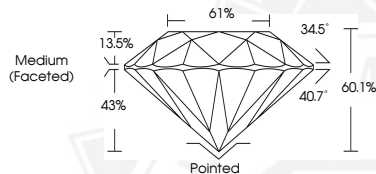
Inscription(s)

IGI LG731504035

Comments: This Laboratory Grown Diamond was created by Chemical Vapor Deposition (CVD) growth process. Type IIa



Sample Image Used



August 26, 2025

IGI Report Number LG731504035

ROUND BRILLIANT

LABORATORY GROWN DIAMOND

5.50 - 5.53 X 3.31 MM

Carat Weight 0.62 CARAT

Color Grade D

Clarity Grade VVS 2

Cut Grade EXCELLENT

Polish EXCELLENT

Symmetry EXCELLENT

Fluorescence NONE

Inscription(s) IGI LG731504035

Comments: This Laboratory Grown Diamond was created by Chemical Vapor Deposition (CVD) growth process. Type IIa



August 26, 2025

IGI Report Number LG731504035

ROUND BRILLIANT

LABORATORY GROWN DIAMOND

5.50 - 5.53 X 3.31 MM

Carat Weight 0.62 CARAT

Color Grade D

Clarity Grade VVS 2

Cut Grade EXCELLENT

Polish EXCELLENT

Symmetry EXCELLENT

Fluorescence NONE

Inscription(s) IGI LG731504035

Comments: This Laboratory Grown Diamond was created by Chemical Vapor Deposition (CVD) growth process. Type IIa



THIS DOCUMENT WAS PRODUCED WITH THE FOLLOWING SECURITY MEASURES: SPECIAL DOCUMENT PAPER, INK SCREENS, WATERMARK, BACKGROUND DESIGNS, HOLOGRAM AND OTHER SECURITY FEATURES NOT LISTED AND DO EXCEED DOCUMENT SECURITY INDUSTRY GUIDELINES.

For terms & conditions and to verify this report, please visit [www.igi.org](http://www.igi.org)