



ELECTRONIC COPY

LABORATORY GROWN DIAMOND REPORT

August 26, 2025	
IGI Report Number	LG731502978
Description	LABORATORY GROWN DIAMOND
Shape and Cutting Style	ROUND BRILLIANT
Measurements	9.33 - 9.36 X 5.74 MM
GRADING RESULTS	
Carat Weight	3.08 CARATS
Color Grade	E
Clarity Grade	VVS 2
Cut Grade	IDEAL

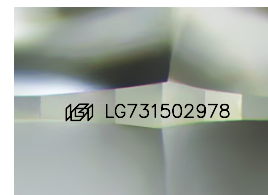
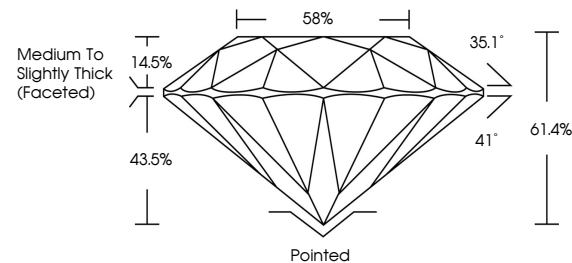
ADDITIONAL GRADING INFORMATION

Polish	EXCELLENT
Symmetry	EXCELLENT
Fluorescence	NONE
Inscription(s)	 LG731502978

Comments: This Laboratory Grown Diamond was created by Chemical Vapor Deposition (CVD) growth process.
Type IIa

LG731502978
Report verification at igi.org

PROPORTIONS



Sample Image Used

COLOR

D E F G H I J Faint Very Light Light

CLARITY

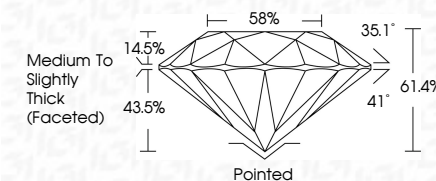
IF WS¹⁻² VS¹⁻² SI¹⁻² |¹⁻³

Internally Flawless	Very Very Slightly Included	Very Slightly Included	Slightly Included	Included
---------------------	-----------------------------	------------------------	-------------------	----------

LABORATORY GROWN DIAMOND REPORT



August 26, 2025	
IGI Report Number	LG731502978
Description	LABORATORY GROWN DIAMOND
Shape and Cutting Style	ROUND BRILLIANT
Measurements	9.33 - 9.36 X 5.74 MM
GRADING RESULTS	
Carat Weight	3.08 CARATS
Color Grade	E
Clarity Grade	VVS 2
Cut Grade	IDEAL



ADDITIONAL GRADING INFORMATION

Polish	EXCELLENT
Symmetry	EXCELLENT
Fluorescence	NONE
Inscription(s)	 LG731502978
<p>Comments: This Laboratory Grown Diamond was created by Chemical Vapor Deposition (CVD) growth process.</p> <p>Type IIa</p>	



© IGI 2020, International Gemological Institute

FD - 10 20

www.igi.org



THIS DOCUMENT WAS PRODUCED WITH THE FOLLOWING SECURITY MEASURES: SPECIAL DOCUMENT PAPER, INK SCREENS, WATERMARK, BACKGROUND DESIGNS, HOLOGRAM AND OTHER SECURITY FEATURES NOT LISTED AND DO EXCEED DOCUMENT SECURITY INDUSTRY GUIDELINES

August 26, 2025
IGI Report No LG731502978
ROUND BRILLIANT

9.33 - 9.36 X 5.74 MM	Carat Weight	3.08 CARATS
	Color Grade	E
	Clarity Grade	VS 2
	Cut Grade	IDEAL
	Depth	61.4%
	Table	58%
	Girdle	Medium to Slightly Thick (Faceted)
	Culet	Pointed
	Polish	EXCELLENT
	Symmetry	EXCELLENT
	Fluorescence	NONE

Comments:
This Laboratory Grown Diamond was created by Chemical Vapor Deposition (CVD) growth process.