



ELECTRONIC COPY

LABORATORY GROWN DIAMOND REPORT

| | |
|-------------------------|--------------------------|
| August 26, 2025 | |
| IGI Report Number | LG731502677 |
| Description | LABORATORY GROWN DIAMOND |
| Shape and Cutting Style | PRINCESS CUT |
| Measurements | 6.26 X 6.13 X 4.46 MM |

GRADING RESULTS

| | |
|---------------|---------------------|
| Carat Weight | 1.51 CARAT |
| Color Grade | D |
| Clarity Grade | INTERNALLY FLAWLESS |

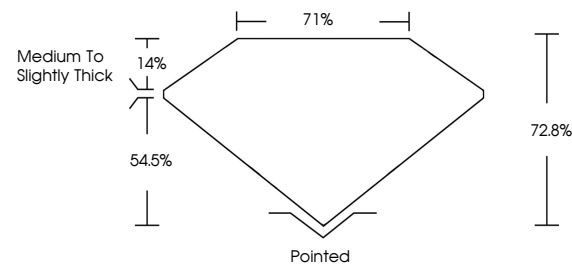
ADDITIONAL GRADING INFORMATION

| | |
|----------------|-----------------|
| Polish | EXCELLENT |
| Symmetry | EXCELLENT |
| Fluorescence | NONE |
| Inscription(s) | 131 LG731502677 |

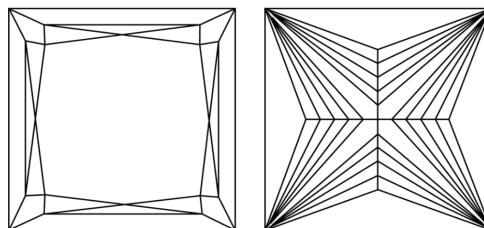
Comments: This Laboratory Grown Diamond was created by Chemical Vapor Deposition (CVD) growth process.
Type IIa

LG731502677
Report verification at igi.org

PROPORTIONS

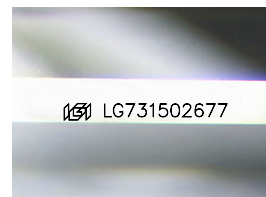


CLARITY CHARACTERISTICS



KEY TO SYMBOLS

Red symbols indicate internal characteristics.
Green symbols indicate external characteristics.



Sample Image Used

COLOR

D E F G H I J Faint Very Light Light

CLARITY

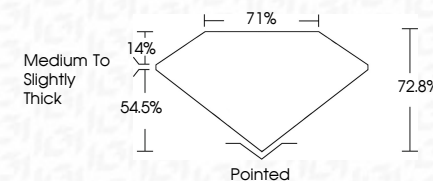
IF VWS¹⁻² VS¹⁻² SI¹⁻² I¹⁻³

| Internally Flawless | Very Very Slightly Included | Very Slightly Included | Slightly Included | Included |
|------------------------|--------------------------------|---------------------------|----------------------|----------|
|------------------------|--------------------------------|---------------------------|----------------------|----------|

LABORATORY GROWN DIAMOND REPORT



| | |
|-------------------------|--------------------------|
| August 26, 2025 | |
| IGI Report Number | LG731502677 |
| Description | LABORATORY GROWN DIAMOND |
| Shape and Cutting Style | PRINCESS CUT |
| Measurements | 6.26 X 6.13 X 4.46 MM |
| GRADING RESULTS | |
| Carat Weight | 1.51 CARAT |
| Color Grade | D |
| Clarity Grade | INTERNALLY FLAWLESS |



ADDITIONAL GRADING INFORMATION

| | |
|---|---|
| Polish | EXCELLENT |
| Symmetry | EXCELLENT |
| Fluorescence | NONE |
| Inscription(s) |  LG731502677 |
| <p>Comments: This Laboratory Grown Diamond was created by Chemical Vapor Deposition (CVD) growth process.</p> <p>Type IIa</p> | |



IG



© IGI 2020, International Gemological Institute

FD - 10 20



THIS DOCUMENT WAS PRODUCED WITH THE FOLLOWING SECURITY MEASURES: SPECIAL DOCUMENT PAPER, INK SCREENS, WATERMARK, BACKGROUND DESIGNS, HOLOGRAM AND OTHER SECURITY FEATURES NOT LISTED AND DO EXCEED DOCUMENT SECURITY INDUSTRY GUIDELINES

www.igi.org

| | | | | | | | | | | |
|--------------------------|-----------------------|-------------|---------------|-------|--------------------|---------|-----------|-----------|----------|-----------------|
| August 26, 2005 | 1,51 CARAT | D | 72.8% | 71% | Thick | Pointed | EXCELLENT | EXCELLENT | NONE | 689 LG731502677 |
| GR Report No LG731502677 | 2.26 X 4.13 X 4.46 MM | | | | Medium to slightly | | | | | |
| PRINCIPAL CUT | Color Weight | Color Grade | Clarity Grade | Depth | Table | Girdle | Culet | Polish | Symmetry | Fluorescence |
| | | | | | | | | | | inscriptions(s) |

Comments: This is a Very Good Diamond was created by Chemical Vapor Deposition (CVD) growth process.

Type IIG