



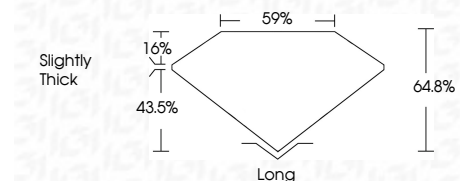
ELECTRONIC COPY

LG731502614  
Report verification at igi.org



August 29, 2025  
IGI Report Number **LG731502614**  
Description **LABORATORY GROWN DIAMOND**  
Shape and Cutting Style **CUT CORNERED RECTANGULAR MIXED CUT**  
Measurements **10.35 X 6.68 X 4.33 MM**

**GRADING RESULTS**  
Carat Weight **3.02 CARATS**  
Color Grade **D**  
Clarity Grade **VVS 2**

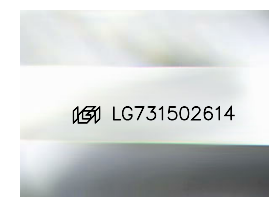


**ADDITIONAL GRADING INFORMATION**  
Polish **EXCELLENT**  
Symmetry **EXCELLENT**  
Fluorescence **NONE**  
Inscription(s) **IGI LG731502614**  
Comments: This Laboratory Grown Diamond was created by Chemical Vapor Deposition (CVD) growth process. Type IIa



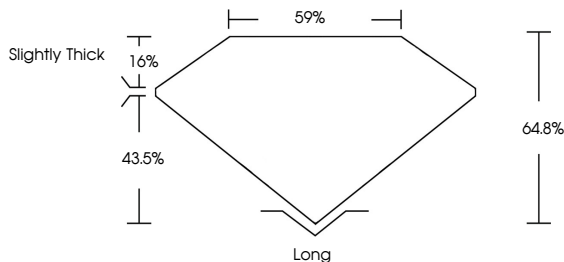
August 29, 2025  
IGI Report No **LG731502614**  
**CUT CORNERED RECT. MIXED CUT**  
**3.02 CARATS**  
Carat Weight **D**  
Color Grade **VVS 2**  
Clarity Grade **64.8%**  
Depth **59%**  
Table **Slightly Thick**  
Girdle  
Culet  
Polish **Long**  
Symmetry **EXCELLENT**  
Fluorescence **EXCELLENT**  
Inscription(s) **NONE**  
**IGI LG731502614**

Comments: This Laboratory Grown Diamond was created by Chemical Vapor Deposition (CVD) growth process. Type IIa

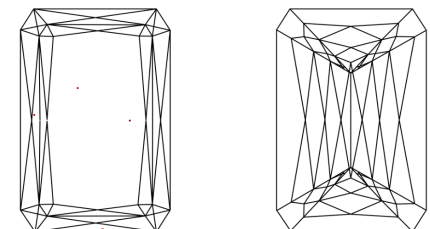


Sample Image Used

PROPORTIONS



CLARITY CHARACTERISTICS



**KEY TO SYMBOLS**  
Red symbols indicate internal characteristics.  
Green symbols indicate external characteristics.

COLOR

D	E	F	G	H	I	J	Faint	Very Light	Light
---	---	---	---	---	---	---	-------	------------	-------

CLARITY

IF	VS <sup>1-2</sup>	VS <sup>1-2</sup>	SI <sup>1-2</sup>	I <sup>1-3</sup>
Internally Flawless	Very Very Slightly Included	Very Slightly Included	Slightly Included	Included

