



September 1, 2025

IGI Report Number **LG730501935**

ROUND BRILLIANT

LABORATORY GROWN DIAMOND

6.26 - 6.32 X 3.87 MM

| | |
|----------------|------------------------|
| Carat Weight | 0.95 CARAT |
| Color Grade | D |
| Clarity Grade | VVS 2 |
| Cut Grade | IDEAL |
| Polish | EXCELLENT |
| Symmetry | EXCELLENT |
| Fluorescence | NONE |
| Inscription(s) | IGI LG730501935 |

Comments: As Grown - No indication of post-growth treatment. This Laboratory Grown Diamond was created by High Pressure High Temperature (HPHT) growth process. Type II

LABORATORY GROWN DIAMOND REPORT

| | |
|-------------------------|---------------------------------|
| September 1, 2025 | |
| IGI Report Number | LG730501935 |
| Description | LABORATORY GROWN DIAMOND |
| Shape and Cutting Style | ROUND BRILLIANT |
| Measurements | 6.26 - 6.32 X 3.87 MM |

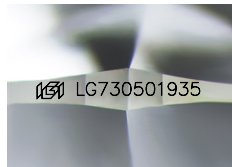
GRADING RESULTS

| | |
|---------------|-------------------|
| Carat Weight | 0.95 CARAT |
| Color Grade | D |
| Clarity Grade | VVS 2 |
| Cut Grade | IDEAL |

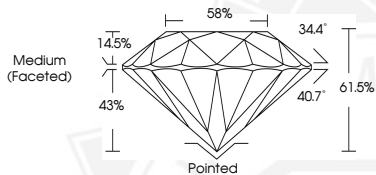
ADDITIONAL GRADING INFORMATION

| | |
|----------------|------------------------|
| Polish | EXCELLENT |
| Symmetry | EXCELLENT |
| Fluorescence | NONE |
| Inscription(s) | IGI LG730501935 |

Comments: As Grown - No indication of post-growth treatment. This Laboratory Grown Diamond was created by High Pressure High Temperature (HPHT) growth process. Type II



Sample Image Used



September 1, 2025

IGI Report Number **LG730501935**

ROUND BRILLIANT

LABORATORY GROWN DIAMOND

6.26 - 6.32 X 3.87 MM

| | |
|----------------|------------------------|
| Carat Weight | 0.95 CARAT |
| Color Grade | D |
| Clarity Grade | VVS 2 |
| Cut Grade | IDEAL |
| Polish | EXCELLENT |
| Symmetry | EXCELLENT |
| Fluorescence | NONE |
| Inscription(s) | IGI LG730501935 |

Comments: As Grown - No indication of post-growth treatment. This Laboratory Grown Diamond was created by High Pressure High Temperature (HPHT) growth process. Type II



THIS DOCUMENT WAS PRODUCED WITH THE FOLLOWING SECURITY MEASURES: SPECIAL DOCUMENT PAPER, INK SCREENS, WATERMARK, BACKGROUND DESIGNS, HOLOGRAM AND OTHER SECURITY FEATURES NOT LISTED AND DO EXCEED DOCUMENT SECURITY INDUSTRY GUIDELINES.