



ELECTRONIC COPY

LABORATORY GROWN DIAMOND REPORT

August 27, 2025  
IGI Report Number LG729599143  
Description LABORATORY GROWN DIAMOND  
Shape and Cutting Style OCTAGONAL MODIFIED BRILLIANT  
Measurements 9.01 X 9.08 X 5.56 MM

GRADING RESULTS

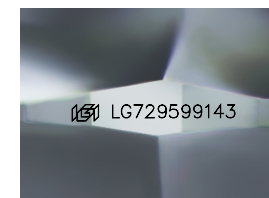
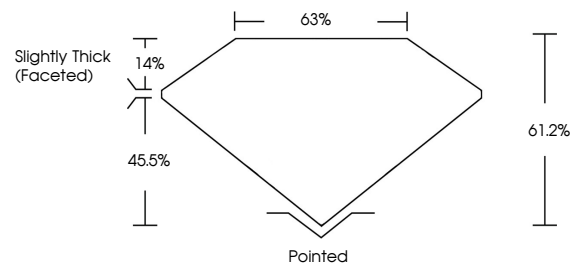
Carat Weight 3.03 CARATS  
Color Grade E  
Clarity Grade VVS 2

ADDITIONAL GRADING INFORMATION

Polish EXCELLENT  
Symmetry EXCELLENT  
Fluorescence NONE  
Inscription(s) LG729599143

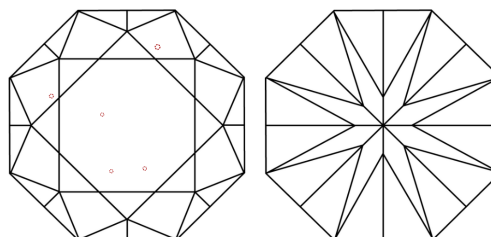
Comments: This Laboratory Grown Diamond was created by Chemical Vapor Deposition (CVD) growth process.  
Type IIa

PROPORTIONS



Sample Image Used

CLARITY CHARACTERISTICS



KEY TO SYMBOLS

Red symbols indicate internal characteristics.  
Green symbols indicate external characteristics.

COLOR

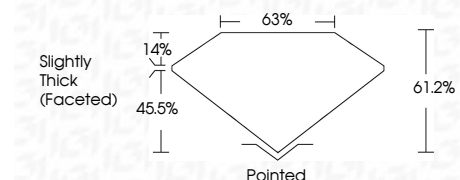
D E F G H I J Faint Very Light Light

CLARITY

IF WS<sup>1-2</sup> VS<sup>1-2</sup> SI<sup>1-2</sup> I<sup>1-3</sup>  
Internally Flawless Very Very Slightly Included Very Slightly Included Slightly Included Included



August 27, 2025  
IGI Report Number LG729599143  
Description LABORATORY GROWN DIAMOND  
Shape and Cutting Style OCTAGONAL MODIFIED BRILLIANT  
Measurements 9.01 X 9.08 X 5.56 MM  
GRADING RESULTS  
Carat Weight 3.03 CARATS  
Color Grade E  
Clarity Grade VVS 2



ADDITIONAL GRADING INFORMATION

Polish EXCELLENT  
Symmetry EXCELLENT  
Fluorescence NONE  
Inscription(s) LG729599143  
Comments: This Laboratory Grown Diamond was created by Chemical Vapor Deposition (CVD) growth process.  
Type IIa



August 27, 2025  
IGI Report No LG729599143  
OCTAGONAL MODIFIED BRILLIANT  
3.03 CARATS E  
Carat Weight 3.03  
Color Grade E  
Clarity Grade VVS 2  
Depth 61.2%  
Table 45.5%  
Girdle Slightly Thick (Faceted)  
Culet Pointed  
Polish EXCELLENT  
Symmetry EXCELLENT  
Fluorescence NONE  
Inscription(s) LG729599143  
Comments: This Laboratory Grown Diamond was created by Chemical Vapor Deposition (CVD) growth process.  
Type IIa