



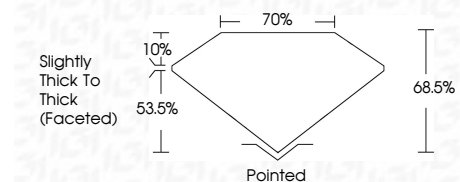
ELECTRONIC COPY

LG729599015
Report verification at igi.org



September 10, 2025
IGI Report Number **LG729599015**
Description **LABORATORY GROWN DIAMOND**
Shape and Cutting Style **FLOWER MODIFIED BRILLIANT**
Measurements **7.63 X 7.42 X 5.08 MM**

GRADING RESULTS
Carat Weight **2.49 CARATS**
Color Grade **E**
Clarity Grade **VVS 2**



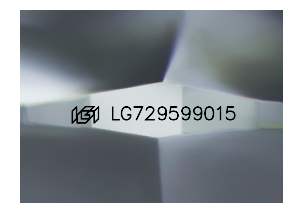
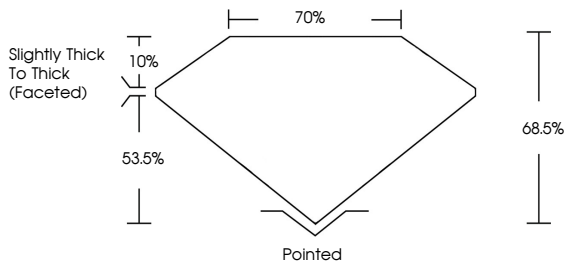
ADDITIONAL GRADING INFORMATION
Polish **EXCELLENT**
Symmetry **EXCELLENT**
Fluorescence **NONE**
Inscription(s) **IGI LG729599015**
Comments: This Laboratory Grown Diamond was created by Chemical Vapor Deposition (CVD) growth process. Type IIa



September 10, 2025
IGI Report No LG729599015
FLOWER MODIFIED BRILLIANT
7.63 X 7.42 X 5.08 MM
2.49 CARATS
E
VVS 2
68.5%
70%
Slightly Thick To Thick (Faceted)
Pointed
EXCELLENT
EXCELLENT
NONE
IGI LG729599015
Comments: This Laboratory Grown Diamond was created by Chemical Vapor Deposition (CVD) growth process. Type IIa

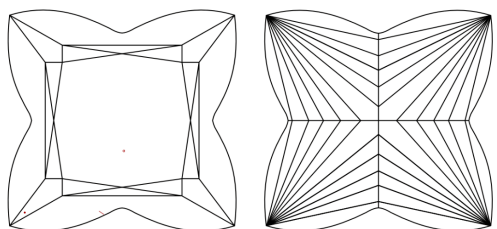
September 10, 2025
IGI Report Number **LG729599015**
Description **LABORATORY GROWN DIAMOND**
Shape and Cutting Style **FLOWER MODIFIED BRILLIANT**
Measurements **7.63 X 7.42 X 5.08 MM**
GRADING RESULTS
Carat Weight **2.49 CARATS**
Color Grade **E**
Clarity Grade **VVS 2**
ADDITIONAL GRADING INFORMATION
Polish **EXCELLENT**
Symmetry **EXCELLENT**
Fluorescence **NONE**
Inscription(s) **IGI LG729599015**
Comments: This Laboratory Grown Diamond was created by Chemical Vapor Deposition (CVD) growth process. Type IIa

PROPORTIONS



Sample Image Used

CLARITY CHARACTERISTICS



KEY TO SYMBOLS

Red symbols indicate internal characteristics.
Green symbols indicate external characteristics.

COLOR

D	E	F	G	H	I	J	Faint	Very Light	Light
---	---	---	---	---	---	---	-------	------------	-------

CLARITY

IF	VS ¹⁻²	VS ¹⁻²	SI ¹⁻²	I ¹⁻³
Internally Flawless	Very Very Slightly Included	Very Slightly Included	Slightly Included	Included

