



**ELECTRONIC COPY**

LG729599012  
Report verification at igi.org



September 10, 2025  
IGI Report Number **LG729599012**  
Description **LABORATORY GROWN DIAMOND**  
Shape and Cutting Style **FLOWER MODIFIED BRILLIANT**  
Measurements **8.12 X 7.93 X 5.27 MM**

**GRADING RESULTS**

Carat Weight **2.89 CARATS**  
Color Grade **E**  
Clarity Grade **VS 1**

**LABORATORY GROWN DIAMOND REPORT**

September 10, 2025  
IGI Report Number **LG729599012**  
Description **LABORATORY GROWN DIAMOND**  
Shape and Cutting Style **FLOWER MODIFIED BRILLIANT**  
Measurements **8.12 X 7.93 X 5.27 MM**

**GRADING RESULTS**

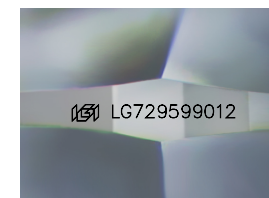
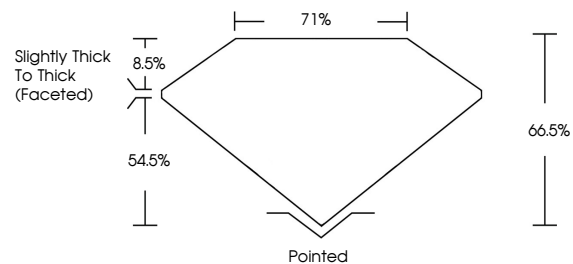
Carat Weight **2.89 CARATS**  
Color Grade **E**  
Clarity Grade **VS 1**

**ADDITIONAL GRADING INFORMATION**

Polish **EXCELLENT**  
Symmetry **EXCELLENT**  
Fluorescence **NONE**  
Inscription(s) **IGI LG729599012**

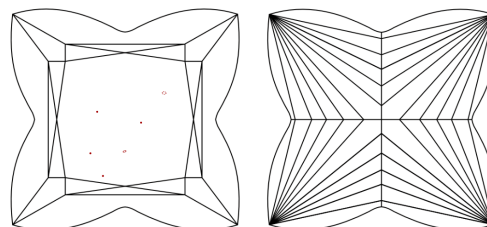
Comments: This Laboratory Grown Diamond was created by Chemical Vapor Deposition (CVD) growth process. Type IIa

**PROPORTIONS**



Sample Image Used

**CLARITY CHARACTERISTICS**



**KEY TO SYMBOLS**

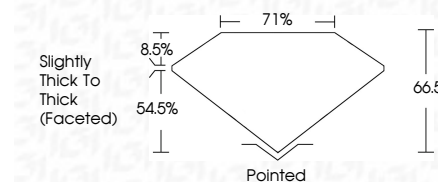
Red symbols indicate internal characteristics.  
Green symbols indicate external characteristics.

**COLOR**

D E F G H I J Faint Very Light Light

**CLARITY**

IF	VS <sup>1-2</sup>	VS <sup>1-2</sup>	SI <sup>1-2</sup>	I <sup>1-3</sup>
Internally Flawless	Very Very Slightly Included	Very Slightly Included	Slightly Included	Included



**ADDITIONAL GRADING INFORMATION**

Polish **EXCELLENT**  
Symmetry **EXCELLENT**  
Fluorescence **NONE**  
Inscription(s) **IGI LG729599012**  
Comments: This Laboratory Grown Diamond was created by Chemical Vapor Deposition (CVD) growth process. Type IIa



**IGI**



September 10, 2025  
IGI Report No **LG729599012**  
**FLOWER MODIFIED BRILLIANT**  
8.12 X 7.93 X 5.27 MM  
2.89 CARATS  
E  
VS 1  
66.5%  
71%  
Slightly Thick To Thick (Faceted)  
Pointed  
EXCELLENT  
EXCELLENT  
NONE  
IGI LG729599012

Comments: This Laboratory Grown Diamond was created by Chemical Vapor Deposition (CVD) growth process. Type IIa