



ELECTRONIC COPY

LG729598927
Report verification at igi.org



September 2, 2025
IGI Report Number **LG729598927**
Description **LABORATORY GROWN DIAMOND**
Shape and Cutting Style **CUSHION MODIFIED BRILLIANT**
Measurements **10.05 X 7.45 X 5.08 MM**
GRADING RESULTS
Carat Weight **3.09 CARATS**
Color Grade **FANCY VIVID GREENISH YELLOW**
Clarity Grade **VS 2**

LABORATORY GROWN DIAMOND REPORT

September 2, 2025
IGI Report Number **LG729598927**
Description **LABORATORY GROWN DIAMOND**
Shape and Cutting Style **CUSHION MODIFIED BRILLIANT**
Measurements **10.05 X 7.45 X 5.08 MM**

GRADING RESULTS

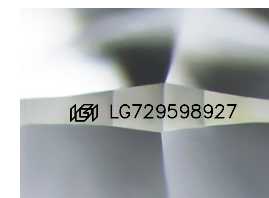
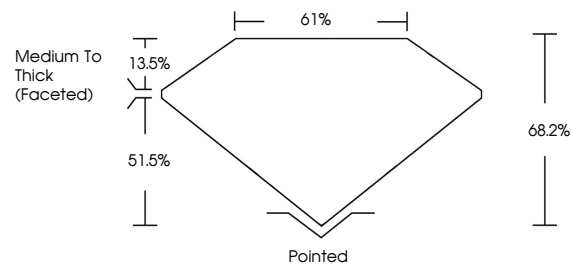
Carat Weight **3.09 CARATS**
Color Grade **FANCY VIVID GREENISH YELLOW**
Clarity Grade **VS 2**

ADDITIONAL GRADING INFORMATION

Polish **EXCELLENT**
Symmetry **EXCELLENT**
Fluorescence **NONE**
Inscription(s) **IGI LG729598927**

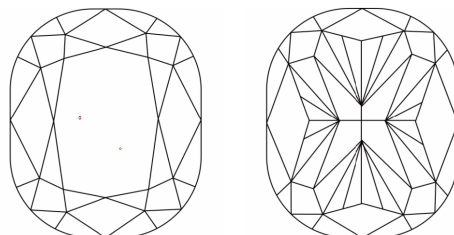
Comments: This Laboratory Grown Diamond was created by Chemical Vapor Deposition (CVD) growth process.
Indications of post-growth treatment.

PROPORTIONS



Sample Image Used

CLARITY CHARACTERISTICS



KEY TO SYMBOLS

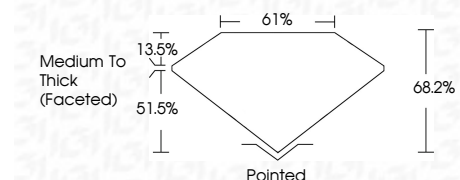
Red symbols indicate internal characteristics.
Green symbols indicate external characteristics.

COLOR

D E F G H I J Faint Very Light Light

CLARITY

IF	VS ¹⁻²	VS ¹⁻²	SI ¹⁻²	I ¹⁻³
Internally Flawless	Very Very Slightly Included	Very Slightly Included	Slightly Included	Included



ADDITIONAL GRADING INFORMATION

Polish **EXCELLENT**
Symmetry **EXCELLENT**
Fluorescence **NONE**
Inscription(s) **IGI LG729598927**
Comments: This Laboratory Grown Diamond was created by Chemical Vapor Deposition (CVD) growth process.
Indications of post-growth treatment.



September 2, 2025
IGI Report No **LG729598927**
CUSHION MODIFIED BRILLIANT
3.09 CARATS
Carat Weight **3.09 CARATS**
Color Grade **FANCY VIVID GREENISH YELLOW**
Clarity Grade **VS 2**
Depth **68.2%**
Table **61%**
Girdle **Medium To Thick (Faceted)**
Culet **Pointed**
Polish **EXCELLENT**
Symmetry **EXCELLENT**
Fluorescence **NONE**
Inscription(s) **IGI LG729598927**
Comments: This Laboratory Grown Diamond was created by Chemical Vapor Deposition (CVD) growth process.
Indications of post-growth treatment.