

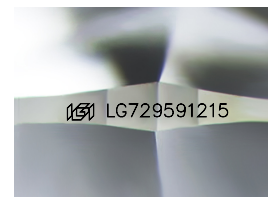
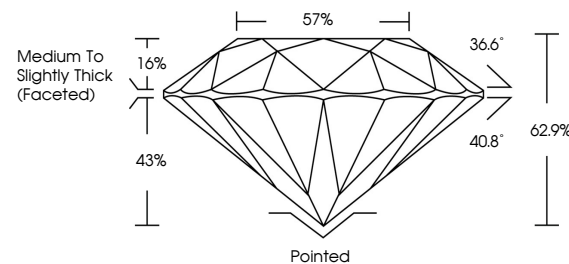


ELECTRONIC COPY

LABORATORY GROWN DIAMOND REPORT

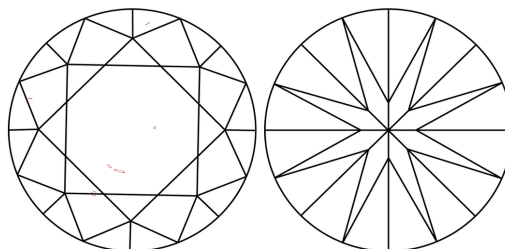
LG729591215
Report verification at igi.org

PROPORTIONS



Sample Image Used

CLARITY CHARACTERISTICS



KEY TO SYMBOLS

Red symbols indicate internal characteristics.
Green symbols indicate external characteristics.

COLOR

D E F G H I J Faint Very Light Light

CLARITY

IF WS¹⁻² VS¹⁻² SI¹⁻² |¹⁻³

Internally Flawless	Very Very Slightly Included	Very Slightly Included	Slightly Included	Included
------------------------	--------------------------------	---------------------------	----------------------	----------



© IGI 2020, International Gemological Institute

FD - 10 20

www.igi.org

LABORATORY GROWN DIAMOND REPORT



August 27, 2025

IGI Report Number **LG729591215**Description **LABORATORY GROWN DIAMOND**Shape and Cutting Style **ROUND BRILLIANT**

Measurements 6.41 - 6.49 X 4.06 MM

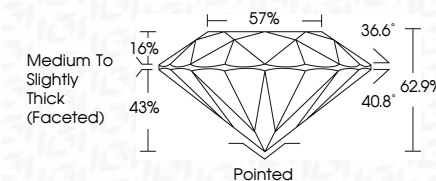
GRADING RESULTS

Carat Weight **1.06 CARAT**

Color Grade	E
-------------	---

Clarity Grade VS 1

Cut Grade **EXCELLENT**



ADDITIONAL GRADING INFORMATION

Polish VERY GOOD

Symmetry **VERY GOOD**

Fluorescence NONI

Inscription(s) LG729591215

Comments: As Grown - No indication of post-growth treatment.

This Laboratory Grown Diamond was created by High Pressure High Temperature (HPHT) growth process.

Type II



August 27, 2026	1.06 CARAT
Report No. LG725691215	
ROUND BRILLIANT	
4.11 - 4.49 X 4.05 MM	
Carat Weight	
Color Grade	E
Clarity Grade	VS 1
Cut Grade	EXCELLENT
Depth	62.5%
Table	57%
Girdle	Medium to Slightly Thick (Facing)
Culet	Pointed
Polish	VERY GOOD
Symmetry	VERY GOOD
Fluorescence	NONE
Inscriptions(s)	681 LG725691215

Comments:
As Grown - No indication of post-growth treatment.
This Laboratory Grown Diamond was created by High Pressure High Temperature (HPHT) growth process.