



ELECTRONIC COPY

LG729589882
Report verification at igi.org



September 5, 2025

IGI Report Number **LG729589882**

Description **LABORATORY GROWN DIAMOND**

Shape and Cutting Style **SQUARE EMERALD CUT**

Measurements **5.51 X 5.47 X 3.74 MM**

GRADING RESULTS

Carat Weight **1.09 CARAT**

Color Grade **FANCY VIVID BLUE**

Clarity Grade **VVS 1**

September 5, 2025
IGI Report Number **LG729589882**
Description **LABORATORY GROWN DIAMOND**
Shape and Cutting Style **SQUARE EMERALD CUT**
Measurements **5.51 X 5.47 X 3.74 MM**

GRADING RESULTS

Carat Weight **1.09 CARAT**

Color Grade **FANCY VIVID BLUE**

Clarity Grade **VVS 1**

ADDITIONAL GRADING INFORMATION

Polish **EXCELLENT**

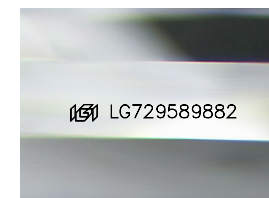
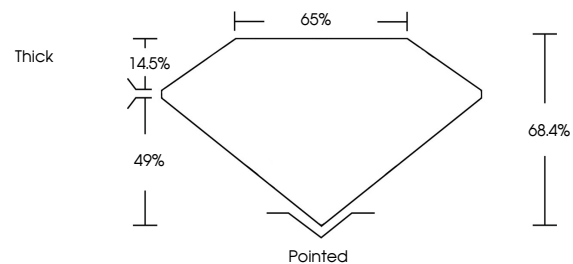
Symmetry **EXCELLENT**

Fluorescence **NONE**

Inscription(s) **IGI LG729589882**

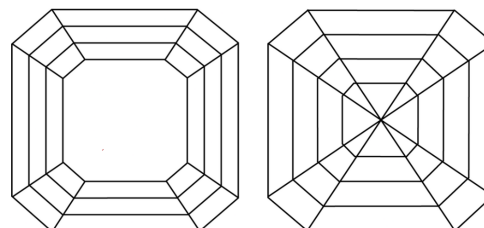
Comments: This Laboratory Grown Diamond was created by High Pressure High Temperature (HPHT) growth process. Indications of post-growth treatment.

PROPORTIONS



Sample Image Used

CLARITY CHARACTERISTICS



KEY TO SYMBOLS

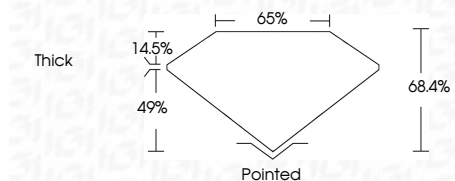
Red symbols indicate internal characteristics.
Green symbols indicate external characteristics.

COLOR

D E F G H I J Faint Very Light Light

CLARITY

IF	VS ¹⁻²	VS ¹⁻²	SI ¹⁻²	I ¹⁻³
Internally Flawless	Very Very Slightly Included	Very Slightly Included	Slightly Included	Included



ADDITIONAL GRADING INFORMATION

Polish **EXCELLENT**

Symmetry **EXCELLENT**

Fluorescence **NONE**

Inscription(s) **IGI LG729589882**

Comments: This Laboratory Grown Diamond was created by High Pressure High Temperature (HPHT) growth process. Indications of post-growth treatment.



IGI



September 5, 2025
IGI Report No LG729589882
SQUARE EMERALD CUT

1.09 CARAT
Carat Weight

FANCY VIVID BLUE
Color Grade

VVS 1
Clarity Grade

68.4%
Depth

65%
Table

Thick
Girdle

Pointed
Culet

EXCELLENT
Polish

EXCELLENT
Symmetry

NONE
Fluorescence

IGI LG729589882
Inscription(s)

Comments: This Laboratory Grown Diamond was created by High Pressure High Temperature (HPHT) growth process. Indications of post-growth treatment.