

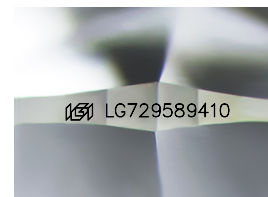
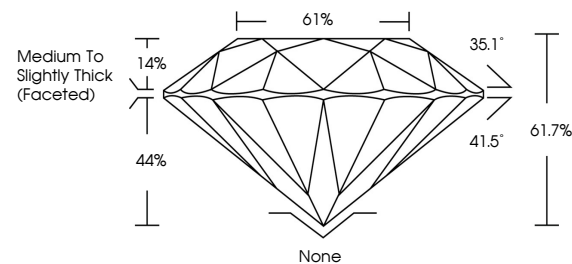


ELECTRONIC COPY

LABORATORY GROWN DIAMOND REPORT

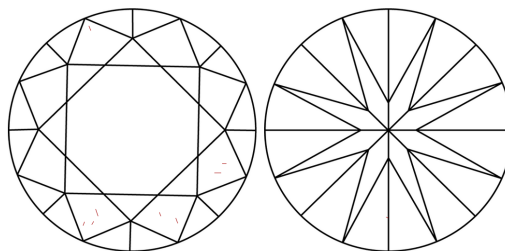
LG729589410
Report verification at igi.org

PROPORTIONS



Sample Image Used

CLARITY CHARACTERISTICS



KEY TO SYMBOLS

Red symbols indicate internal characteristics.
Green symbols indicate external characteristics.

COLOR

D E F G H I J Faint Very Light Light

CLARITY

IF WS¹⁻² VS¹⁻² S¹⁻² |¹⁻³

Internally Flawless	Very Very Slightly Included	Very Slightly Included	Slightly Included	Included
------------------------	--------------------------------	---------------------------	----------------------	----------



August 26, 2025

IGI Report Number **LG729589410**Description **LABORATORY GROWN DIAMOND**Shape and Cutting Style **ROUND BRILLIANT**

Measurements 6.56 - 6.60 X 4.06 MM

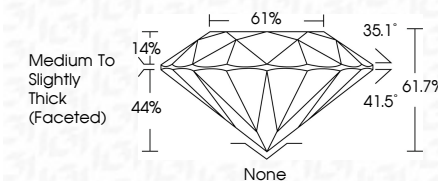
GRADING RESULTS

Carat Weight **1.10 CARAT**

Color Grade D

Clarity Grade VVS 2

Cut Grade **EXCELLENT**



ADDITIONAL GRADING INFORMATION

Polish VERY GOOD

Symmetry VERY GOOD

Fluorescence NONI

Inscription(s)  LG729589410

Comments: As Grown - No indication of post-growth treatment.

This Laboratory Grown Diamond was created by High Pressure High Temperature (HPHT) growth process.



© IGI 2020, International Gemological Institute

FD - 10 20



THIS DOCUMENT WAS PRODUCED WITH THE FOLLOWING SECURITY MEASURES: SPECIAL DOCUMENT PAPER, INK SCREENS, WATERMARK, BACKGROUND DESIGNS, HOLOGRAM AND OTHER SECURITY FEATURES NOT LISTED AND DO EXCEED DOCUMENT SECURITY INDUSTRY GUIDELINES

www.igi.org

August 26, 2026	
GJ Report No LG72698410	
ROUND BRILLIANT	
1.10 CARAT	VVS 2
D	EXCELLENT
Color Grade	61.7%
Clarity Grade	61%
Cutlet	Medium to slightly Thick Facetted
Flesh	None
Symmetry	VERY GOOD
Fluorescence	VERY GOOD
Inclusions	NONE
Comments:	#68 LG72698410
As Grown - No indication of post-growth treatment.	
This Laboratory Growth Diamond was created by High Pressure High Temperature (HPHT) growth process.	