



ELECTRONIC COPY

LABORATORY GROWN DIAMOND REPORT

August 25, 2025	
IGI Report Number	LG729589351
Description	LABORATORY GROWN DIAMOND
Shape and Cutting Style	ROUND BRILLIANT
Measurements	6.62 - 6.68 X 4.02 MM

GRADING RESULTS

Carat Weight	1.10 CARAT
Color Grade	E
Clarity Grade	VS 1
Cut Grade	EXCELLENT

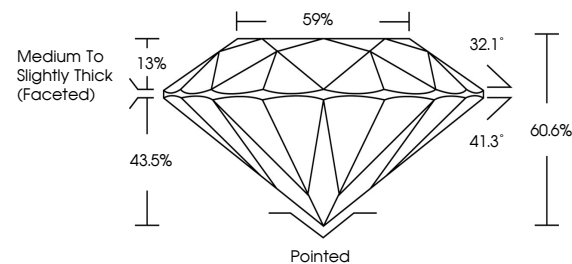
ADDITIONAL GRADING INFORMATION

Polish	VERY GOOD
Symmetry	VERY GOOD
Fluorescence	NONE
Inscription(s)	15 LG729589351

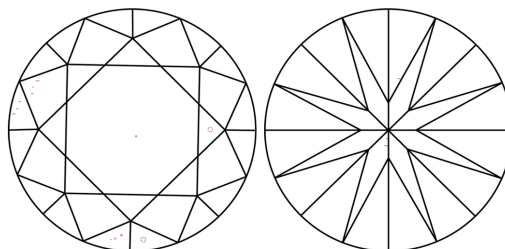
Comments: As Grown - No indication of post-growth treatment.
This Laboratory Grown Diamond was created by High Pressure High Temperature (HPHT) growth process.
Type II

LG729589351
Report verification at igi.org

PROPORTIONS

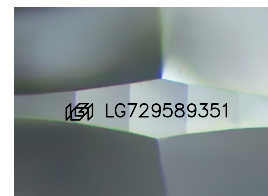


CLARITY CHARACTERISTICS



KEY TO SYMBOLS

Red symbols indicate internal characteristics.
Green symbols indicate external characteristics.



Sample Image Used

COLOR

D E F G H I J Faint Very Light Light

CLARITY

IF WS¹⁻² VS¹⁻² SI¹⁻² I¹⁻³

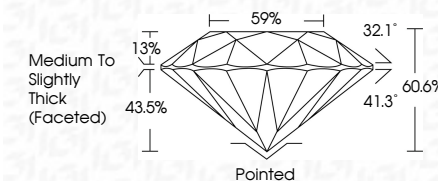
Internally Flawless	Very Very Slightly Included	Very Slightly Included	Slightly Included	Included
------------------------	--------------------------------	---------------------------	----------------------	----------



August 25, 2025	
IGI Report Number	LG729589351
Description	LABORATORY GROWN DIAMOND
Shape and Cutting Style	ROUND BRILLIANT
Measurements	6.62 - 6.68 X 4.02 MM

GRADING RESULTS

Carat Weight	1.10 CARAT
Color Grade	E
Clarity Grade	VS 1
Cut Grade	EXCELLENT



ADDITIONAL GRADING INFORMATION

Polish	VERY GOOD
Symmetry	VERY GOOD
Fluorescence	NONE
Inscription(s)	 LG729589351
Comments: As Grown - No indication of post-growth treatment.	
This Laboratory Grown Diamond was created by High Pressure High Temperature (HPHT) growth process.	
Type II	



© IGI 2020, International Gemological Institute

FD - 10 20



THIS DOCUMENT WAS PRODUCED WITH THE FOLLOWING SECURITY MEASURES: SPECIAL DOCUMENT PAPER, INK SCREENS, WATERMARK, BACKGROUND DESIGNS, HOLOGRAM AND OTHER SECURITY FEATURES NOT LISTED AND DO EXCEED DOCUMENT SECURITY INDUSTRY GUIDELINE

www.igi.org

August 26, 2026		
GI Report No. L672698351		
ROUND BRILLIANT		
6.22 - 6.29 x 4.68 x 4.02 MM		
Carat Weight	VS 1	1.10 CARAT
Color Grade	EXCELLENT	E
Clarity Grade	60/65	
Cut Grade	5/9	
Depth	Medium to slightly thick (faceted)	
Table		
Girdle		
Culet	Pointed	
Polish	VERY GOOD	
Symmetry	VERY GOOD	
Fluorescence	NONE	
Inscriptions(s)	6581 L672698351	
Comments:		
As Grown - No indication of post-growth treatment.		
The Lucky Eye Green Diamond was cut by a highly skilled, high pressure, high temperature (HPHT) growth process.		