

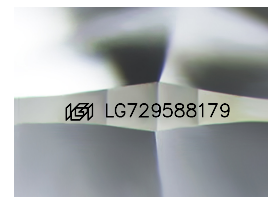
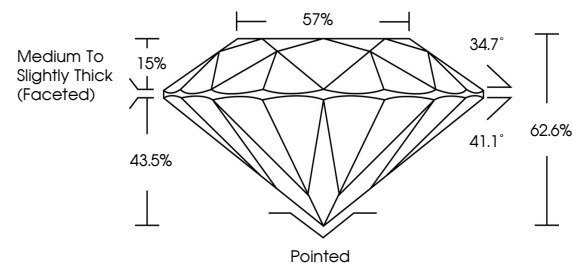


ELECTRONIC COPY

LABORATORY GROWN DIAMOND REPORT

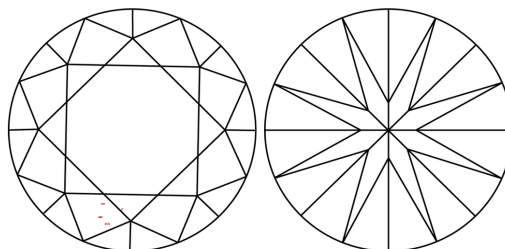
LG729588179
Report verification at igi.org

PROPORTIONS



Sample Image Used

CLARITY CHARACTERISTICS



KEY TO SYMBOLS

Red symbols indicate internal characteristics.
Green symbols indicate external characteristics.

COLOR

D E F G H I J Faint Very Light Light

CLARITY

IF WS¹⁻² VS¹⁻² SI¹⁻² |¹⁻³

Internally Flawless	Very Very Slightly Included	Very Slightly Included	Slightly Included	Included
------------------------	--------------------------------	---------------------------	----------------------	----------



© IGI 2020, International Gemological Institute

FD - 10 20

www.igi.org

LABORATORY GROWN DIAMOND REPORT



August 25, 2025

IGI Report Number **LG729588179**Description **LABORATORY GROWN DIAMOND**Shape and Cutting Style **ROUND BRILLIANT**

Measurements 7.99 - 8.05 X 5.03 MM

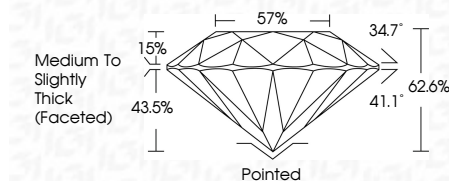
GRADING RESULTS

Carat Weight **2.00 CARATS**

Color Grade	E
-------------	---

Clarity Grade VS 1

Cut Grade **EXCELLENT**



ADDITIONAL GRADING INFORMATION

Polish **EXCELLENT**Symmetry **EXCELLENT**Fluorescence **NONE**Inscription(s)  LG729588179

Comments: As Grown - No indication of post-growth treatment.

This Laboratory Grown Diamond was created by High Pressure High Temperature (HPHT) growth process.
Type II



August 26, 2026	2.00 CARATS
G Report No. LG729588179	E
ROUND BRILLIANT	VS 1
9.99 - 9.05 X 5.03 MM	EXCELLENT
Carat Weight	62.6%
Color Grade	57%
Clarity Grade	Medium to Slightly Thick Faceted
Cut Grade	Pointed
Depth	EXCELLENT
Table	EXCELLENT
Girdle	NONE
	681 LG729588179

Comments:

- As Grown - No indication of post-growth treatment.
- This Laboratory Grown Diamond was created by High Pressure High Temperature (HPHT) growth process.
- None