



ELECTRONIC COPY

LG729579443
Report verification at igi.org



September 4, 2025
IGI Report Number **LG729579443**
Description **LABORATORY GROWN DIAMOND**
Shape and Cutting Style **SQUARE CUSHION MODIFIED BRILLIANT**
Measurements **13.98 X 13.26 X 8.06 MM**
GRADING RESULTS
Carat Weight **14.04 CARATS**
Color Grade **FANCY INTENSE PINK**
Clarity Grade **VS 2**

LABORATORY GROWN DIAMOND REPORT

September 4, 2025
IGI Report Number **LG729579443**
Description **LABORATORY GROWN DIAMOND**
Shape and Cutting Style **SQUARE CUSHION MODIFIED BRILLIANT**
Measurements **13.98 X 13.26 X 8.06 MM**

GRADING RESULTS

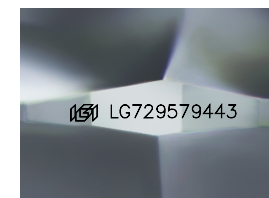
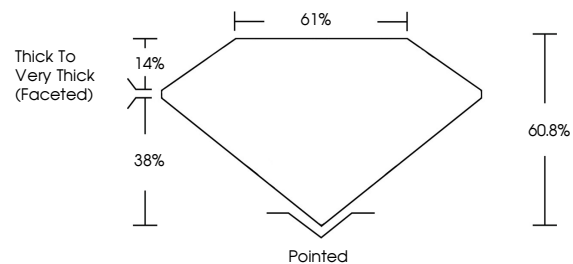
Carat Weight **14.04 CARATS**
Color Grade **FANCY INTENSE PINK**
Clarity Grade **VS 2**

ADDITIONAL GRADING INFORMATION

Polish **EXCELLENT**
Symmetry **EXCELLENT**
Fluorescence **STRONG**
Inscription(s) **IGI LG729579443**

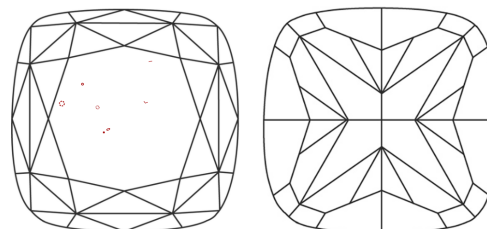
Comments: This Laboratory Grown Diamond was created by Chemical Vapor Deposition (CVD) growth process. Indications of post-growth treatment.

PROPORTIONS



Sample Image Used

CLARITY CHARACTERISTICS



KEY TO SYMBOLS

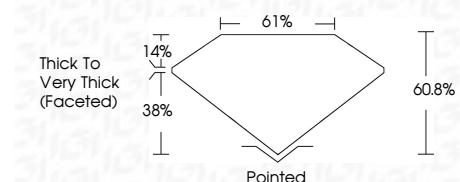
Red symbols indicate internal characteristics.
Green symbols indicate external characteristics.

COLOR

D E F G H I J Faint Very Light Light

CLARITY

IF	VS ¹⁻²	VS ¹⁻²	SI ¹⁻²	I ¹⁻³
Internally Flawless	Very Very Slightly Included	Very Slightly Included	Slightly Included	Included



ADDITIONAL GRADING INFORMATION

Polish **EXCELLENT**
Symmetry **EXCELLENT**
Fluorescence **STRONG**
Inscription(s) **IGI LG729579443**
Comments: This Laboratory Grown Diamond was created by Chemical Vapor Deposition (CVD) growth process. Indications of post-growth treatment.



September 4, 2025
IGI Report No LG729579443
SQUARE CUSHION MODIFIED BRILLIANT
14.04 CARATS
FANCY INTENSE PINK
VS 2
60.8%
61%
Thick to Very Thick (Faceted)
Pointed
EXCELLENT
EXCELLENT
STRONG
IGI LG729579443
Comments: This Laboratory Grown Diamond was created by Chemical Vapor Deposition (CVD) growth process. Indications of post-growth treatment.