



ELECTRONIC COPY

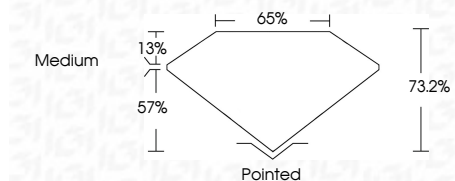
LG729579246 Report verification at igi.org



September 12, 2025 IGI Report Number LG729579246 Description LABORATORY GROWN DIAMOND Shape and Cutting Style PRINCESS CUT Measurements 5.73 X 5.71 X 4.18 MM

GRADING RESULTS

Carat Weight 1.16 CARAT Color Grade D Clarity Grade VVS 1



ADDITIONAL GRADING INFORMATION

Polish EXCELLENT Symmetry EXCELLENT Fluorescence NONE Inscription(s) IGI LG729579246 Comments: As Grown - No indication of post-growth treatment. This Laboratory Grown Diamond was created by High Pressure High Temperature (HPHT) growth process. Type II



September 12, 2025 IGI Report No LG729579246 PRINCESS CUT 1.16 CARAT D 5.73 X 5.71 X 4.18 MM Color Grade D Clarity Grade VVS 1 Depth 73.2% Table 57% Girdle Medium Culet Polished EXCELLENT Symmetry EXCELLENT Fluorescence NONE Inscription(s) IGI LG729579246 Comments: As Grown - No indication of post-growth treatment. This Laboratory Grown Diamond was created by High Pressure High Temperature (HPHT) growth process. Type II

LABORATORY GROWN DIAMOND REPORT

September 12, 2025 IGI Report Number LG729579246 Description LABORATORY GROWN DIAMOND Shape and Cutting Style PRINCESS CUT Measurements 5.73 X 5.71 X 4.18 MM

GRADING RESULTS

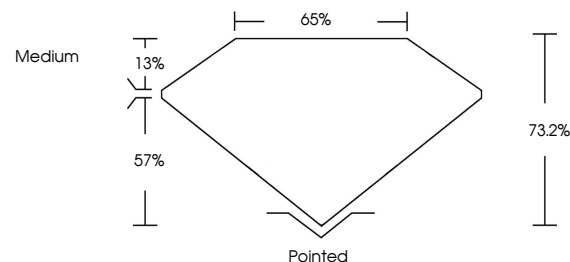
Carat Weight 1.16 CARAT Color Grade D Clarity Grade VVS 1

ADDITIONAL GRADING INFORMATION

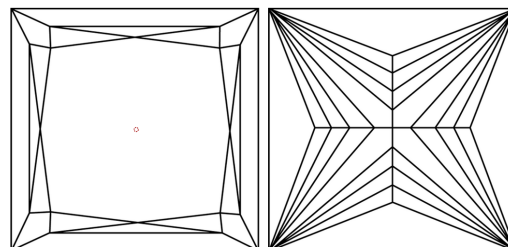
Polish EXCELLENT Symmetry EXCELLENT Fluorescence NONE Inscription(s) IGI LG729579246

Comments: As Grown - No indication of post-growth treatment. This Laboratory Grown Diamond was created by High Pressure High Temperature (HPHT) growth process. Type II

PROPORTIONS

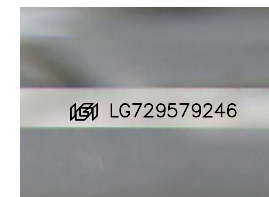


CLARITY CHARACTERISTICS



KEY TO SYMBOLS

Red symbols indicate internal characteristics. Green symbols indicate external characteristics.



Sample Image Used

COLOR

D E F G H I J Faint Very Light Light

CLARITY

IF WS 1-2 VS 1-2 SI 1-2 I 1-3 Internally Flawless Very Very Slightly Included Very Slightly Included Slightly Included Included