



**ELECTRONIC COPY**

LG729578011  
Report verification at igi.org



October 11, 2025

IGI Report Number **LG729578011**

Description **LABORATORY GROWN DIAMOND**

Shape and Cutting Style **CUT CORNERED  
RECTANGULAR MODIFIED  
BRILLIANT**

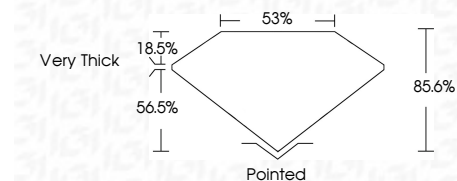
Measurements **7.63 X 4.79 X 4.10 MM**

**GRADING RESULTS**

Carat Weight **1.51 CARAT**

Color Grade **FANCY INTENSE YELLOW**

Clarity Grade **VS 2**



**ADDITIONAL GRADING INFORMATION**

Polish **VERY GOOD**

Symmetry **GOOD**

Fluorescence **NONE**

Inscription(s) **IGI LG729578011**

Comments: This Laboratory Grown Diamond was created by Chemical Vapor Deposition (CVD) growth process.



October 11, 2025	IGI Report No LG729578011	CUT CORNERED RECT. MODIFIED BRILLIANT
7.63 X 4.79 X 4.10 MM	1.51 CARAT	FANCY INTENSE YELLOW
VS 2	85.6%	Very Thick
Polished	VERY GOOD	GOOD
NONE	NONE	IGI LG729578011

Comments: This Laboratory Grown Diamond was created by Chemical Vapor Deposition (CVD) growth process.

October 11, 2025

IGI Report Number **LG729578011**

Description **LABORATORY GROWN DIAMOND**

Shape and Cutting Style **CUT CORNERED RECTANGULAR  
MODIFIED BRILLIANT**

Measurements **7.63 X 4.79 X 4.10 MM**

**GRADING RESULTS**

Carat Weight **1.51 CARAT**

Color Grade **FANCY INTENSE YELLOW**

Clarity Grade **VS 2**

**ADDITIONAL GRADING INFORMATION**

Polish **VERY GOOD**

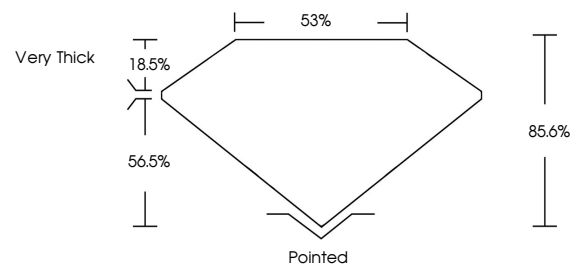
Symmetry **GOOD**

Fluorescence **NONE**

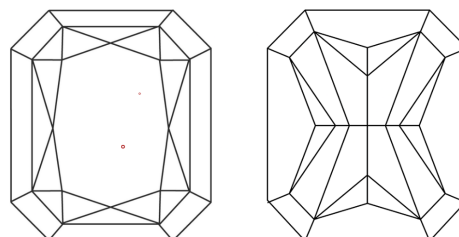
Inscription(s) **IGI LG729578011**

Comments: This Laboratory Grown Diamond was created by Chemical Vapor Deposition (CVD) growth process.

**PROPORTIONS**

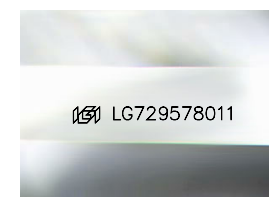


**CLARITY CHARACTERISTICS**



**KEY TO SYMBOLS**

Red symbols indicate internal characteristics.  
Green symbols indicate external characteristics.



Sample Image Used

**COLOR**

D E F G H I J Faint Very Light Light

**CLARITY**

FL IF VS<sup>1-2</sup> VS<sup>1-2</sup> SI<sup>1-2</sup> I<sup>1-3</sup>

Flawless Internally Flawless Very Very Slightly Included Very Slightly Included Slightly Included Included

