



ELECTRONIC COPY

LG729577815
Report verification at igi.org



October 9, 2025

IGI Report Number **LG729577815**

Description **LABORATORY GROWN DIAMOND**

Shape and Cutting Style **ROUND BRILLIANT**

Measurements **6.43 - 6.46 X 3.99 MM**

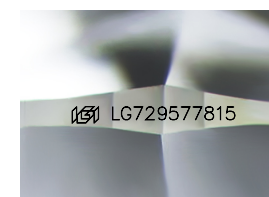
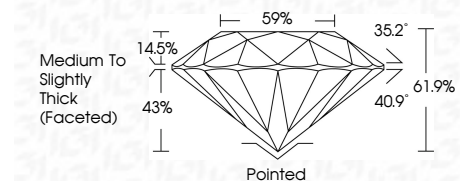
GRADING RESULTS

Carat Weight **1.04 CARAT**

Color Grade **FANCY YELLOW**

Clarity Grade **VS 2**

Cut Grade **IDEAL**



Sample Image Used

ADDITIONAL GRADING INFORMATION

Polish **EXCELLENT**

Symmetry **VERY GOOD**

Fluorescence **NONE**

Inscription(s) **IGI LG729577815**

Comments: This Laboratory Grown Diamond was created by Chemical Vapor Deposition (CVD) growth process.



October 9, 2025
IGI Report No LG729577815
ROUND BRILLIANT
1.04 CARAT
FANCY YELLOW
VS 2
IDEAL
61.9%
59%
Medium To Slightly Thick (Faceted)
Pointed
EXCELLENT
VERY GOOD
NONE
IGI LG729577815
Comments: This Laboratory Grown Diamond was created by Chemical Vapor Deposition (CVD) growth process.

October 9, 2025

IGI Report Number **LG729577815**

Description **LABORATORY GROWN DIAMOND**

Shape and Cutting Style **ROUND BRILLIANT**

Measurements **6.43 - 6.46 X 3.99 MM**

GRADING RESULTS

Carat Weight **1.04 CARAT**

Color Grade **FANCY YELLOW**

Clarity Grade **VS 2**

Cut Grade **IDEAL**

ADDITIONAL GRADING INFORMATION

Polish **EXCELLENT**

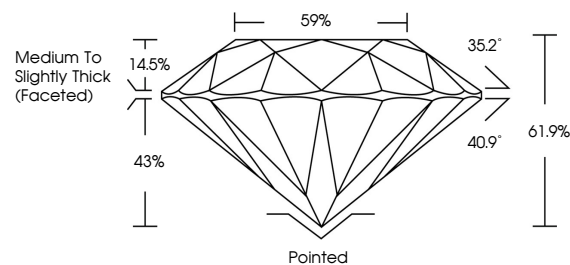
Symmetry **VERY GOOD**

Fluorescence **NONE**

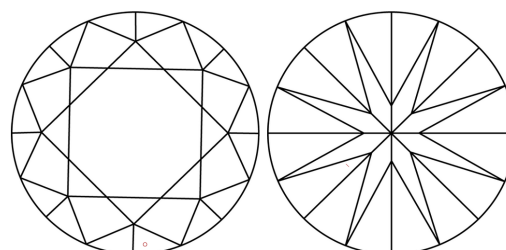
Inscription(s) **IGI LG729577815**

Comments: This Laboratory Grown Diamond was created by Chemical Vapor Deposition (CVD) growth process.

PROPORTIONS



CLARITY CHARACTERISTICS



KEY TO SYMBOLS

Red symbols indicate internal characteristics.
Green symbols indicate external characteristics.

COLOR

D E F G H I J Faint Very Light Light

CLARITY

FL IF VS¹⁻² VS¹⁻² SI¹⁻² I¹⁻³

Flawless Internally Flawless Very Very Slightly Included Very Slightly Included Slightly Included Included

