



ELECTRONIC COPY

LABORATORY GROWN DIAMOND REPORT

September 16, 2025  
IGI Report Number LG729573220  
Description LABORATORY GROWN DIAMOND  
Shape and Cutting Style PRINCESS CUT  
Measurements 7.74 X 7.71 X 5.59 MM

GRADING RESULTS

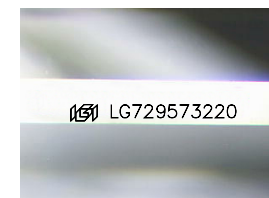
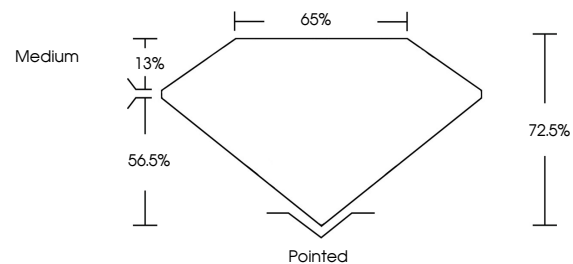
Carat Weight 2.87 CARATS  
Color Grade E  
Clarity Grade VVS 2

ADDITIONAL GRADING INFORMATION

Polish EXCELLENT  
Symmetry EXCELLENT  
Fluorescence NONE  
Inscription(s) IGI LG729573220

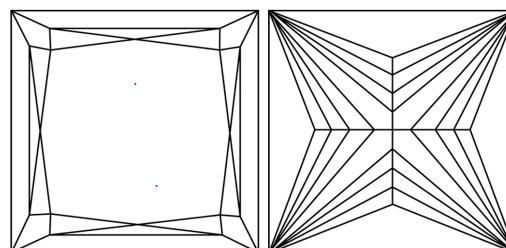
Comments: This Laboratory Grown Diamond was created by Chemical Vapor Deposition (CVD) growth process. Type IIa

PROPORTIONS



Sample Image Used

CLARITY CHARACTERISTICS



KEY TO SYMBOLS

Red symbols indicate internal characteristics.  
Green symbols indicate external characteristics.

COLOR

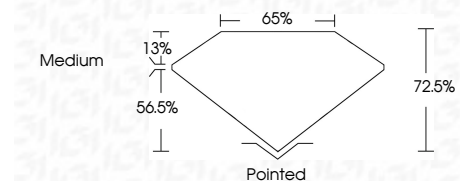
D E F G H I J Faint Very Light Light

CLARITY

IF WS<sup>1-2</sup> VS<sup>1-2</sup> SI<sup>1-2</sup> I<sup>1-3</sup>  
Internally Flawless Very Very Slightly Included Very Slightly Included Slightly Included Included



September 16, 2025  
IGI Report Number LG729573220  
Description LABORATORY GROWN DIAMOND  
Shape and Cutting Style PRINCESS CUT  
Measurements 7.74 X 7.71 X 5.59 MM  
GRADING RESULTS  
Carat Weight 2.87 CARATS  
Color Grade E  
Clarity Grade VVS 2



ADDITIONAL GRADING INFORMATION

Polish EXCELLENT  
Symmetry EXCELLENT  
Fluorescence NONE  
Inscription(s) IGI LG729573220  
Comments: This Laboratory Grown Diamond was created by Chemical Vapor Deposition (CVD) growth process. Type IIa



September 16, 2025  
IGI Report No LG729573220  
PRINCESS CUT  
2.87 CARATS E  
Carat Weight 2.87  
Color Grade E  
Clarity Grade VVS 2  
Depth 56.5%  
Table 13%  
Girdle Medium  
Culet Pointed  
Polish EXCELLENT  
Symmetry EXCELLENT  
Fluorescence NONE  
Inscription(s) IGI LG729573220  
Comments: This Laboratory Grown Diamond was created by Chemical Vapor Deposition (CVD) growth process. Type IIa