



ELECTRONIC COPY

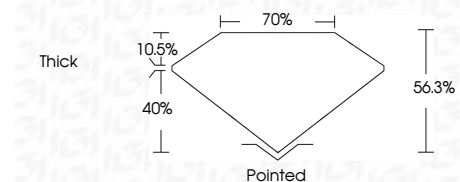
LG729572291
Report verification at igi.org



November 26, 2025
IGI Report Number **LG729572291**
Description **LABORATORY GROWN DIAMOND**
Shape and Cutting Style **MODIFIED SHIELD STEP CUT**
Measurements **7.05 X 6.62 X 3.73 MM**

GRADING RESULTS

Carat Weight **1.04 CARAT**
Color Grade **D**
Clarity Grade **VS 1**



ADDITIONAL GRADING INFORMATION

Polish **EXCELLENT**
Symmetry **EXCELLENT**
Fluorescence **NONE**
Inscription(s) **(IGI) LG729572291**
Comments: As Grown - No indication of post-growth treatment.
This Laboratory Grown Diamond was created by High Pressure High Temperature (HPHT) growth process.
Type II



November 26, 2025
IGI Report No LG729572291
MODIFIED SHIELD STEP CUT
1.04 CARAT
D
1.04 CARAT
D
VS 1
66.8%
70%
Thick
Pointed
EXCELLENT
EXCELLENT
NONE
(IGI) LG729572291
Comments: As Grown - No indication of post-growth treatment.
This Laboratory Grown Diamond was created by High Pressure High Temperature (HPHT) growth process.
Type II

LABORATORY GROWN DIAMOND REPORT

November 26, 2025
IGI Report Number **LG729572291**
Description **LABORATORY GROWN DIAMOND**
Shape and Cutting Style **MODIFIED SHIELD STEP CUT**
Measurements **7.05 X 6.62 X 3.73 MM**

GRADING RESULTS

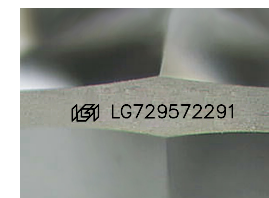
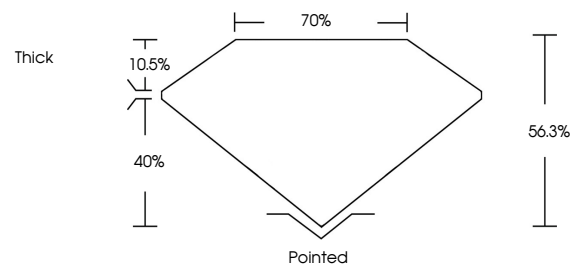
Carat Weight **1.04 CARAT**
Color Grade **D**
Clarity Grade **VS 1**

ADDITIONAL GRADING INFORMATION

Polish **EXCELLENT**
Symmetry **EXCELLENT**
Fluorescence **NONE**
Inscription(s) **(IGI) LG729572291**

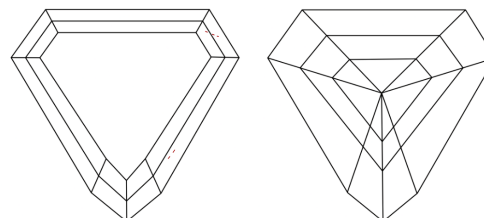
Comments: As Grown - No indication of post-growth treatment.
This Laboratory Grown Diamond was created by High Pressure High Temperature (HPHT) growth process.
Type II

PROPORTIONS



Sample Image Used

CLARITY CHARACTERISTICS



KEY TO SYMBOLS

Red symbols indicate internal characteristics.
Green symbols indicate external characteristics.

COLOR

D E F G H I J Faint Very Light Light

CLARITY

FL	IF	VS ¹⁻²	VS ¹⁻²	SI ¹⁻²	I ¹⁻³
Flawless	Internally Flawless	Very Very Slightly Included	Very Slightly Included	Slightly Included	Included

