



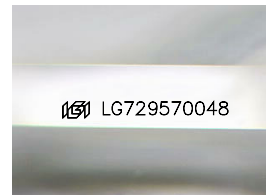
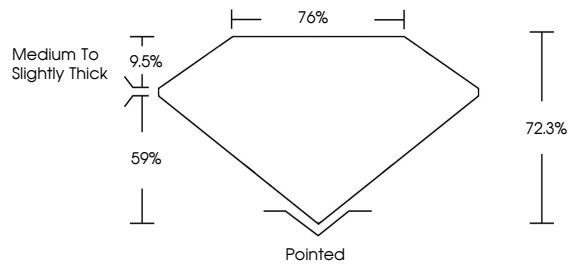
**INTERNATIONAL
GEMOLOGICAL
INSTITUTE**

ELECTRONIC COPY

LABORATORY GROWN DIAMOND REPORT

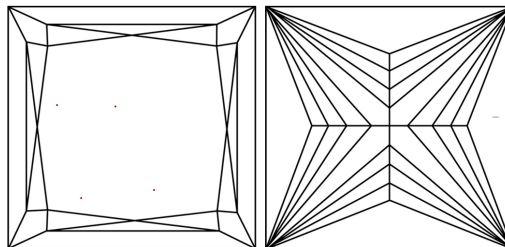
LG729570048
Report verification at igi.org

PROPORTIONS



Sample Image Used

CLARITY CHARACTERISTICS



KEY TO SYMBOLS

Red symbols indicate internal characteristics.
Green symbols indicate external characteristics.

COLOR

D E F G H I J Faint Very Light Light

CLARITY

IF WS¹⁻² VS¹⁻² SI¹⁻² I¹⁻³

Internally Flawless	Very Very Slightly Included	Very Slightly Included	Slightly Included	Included
------------------------	--------------------------------	---------------------------	----------------------	----------



September 13, 2025

IGI Report Number **LG729570048**

Description	LABORATORY GROWN DIAMOND
-------------	--------------------------

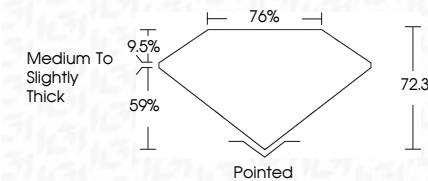
Shape and Cutting Style **PRINCESS CUT**

Measurements **5.67 X 5.55 X 4.01 MM**

GRADING RESULTS

Carat Weight **1.10 CARAT**

Color Grade	E
-------------	---

Clarity Grade VVS 2

ADDITIONAL GRADING INFORMATION

Polish **VERY GOOD**Symmetry **VERY GOOD**Fluorescence **NONE**Inscription(s) LG72957004

Comments: This Laboratory Grown Diamond was created by Chemical Vapor Deposition (CVD) growth process.
Type IIa



IG



© IGI 2020, International Gemological Institute

FD - 10 20

www.igi.org

THIS DOCUMENT WAS PRODUCED WITH THE FOLLOWING SECURITY MEASURES: SPECIAL DOCUMENT PAPER, INK SCREENS, WATERMARK, BACKGROUND DESIGNS, HOLOGRAM AND OTHER SECURITY FEATURES NOT LISTED AND DO EXCEED DOCUMENT SECURITY INDUSTRY GUIDELINES

September 13, 2025
IGI Report No LG729570048
PRINCESS CUT

1.10 CARAT	Color Grade	Clarity Grade	Depth	Table	Girdle	Culet	Polish	Symmetry	Fluorescence
E		VVS 2	72.3%	76%	Medium To Slightly Thick	Pointed	VERY GOOD	VERY GOOD	NONE
15.67 X 5.56 X 4.01 MM									

Comments:
This Laboratory Grown Diamond was created by Chemical Vapor Deposition (CVD) growth process.