



ELECTRONIC COPY

LG729568730
Report verification at igi.org



September 23, 2025

IGI Report Number **LG729568730**

Description **LABORATORY GROWN DIAMOND**

Shape and Cutting Style **CUSHION MODIFIED BRILLIANT**

Measurements **7.95 X 7.94 X 5.15 MM**

GRADING RESULTS

Carat Weight **2.51 CARATS**

Color Grade **G**

Clarity Grade **VS 2**

Cut Grade **GOOD**

LABORATORY GROWN DIAMOND REPORT

September 23, 2025

IGI Report Number **LG729568730**

Description **LABORATORY GROWN DIAMOND**

Shape and Cutting Style **CUSHION MODIFIED BRILLIANT**

Measurements **7.95 X 7.94 X 5.15 MM**

GRADING RESULTS

Carat Weight **2.51 CARATS**

Color Grade **G**

Clarity Grade **VS 2**

Cut Grade **GOOD**

ADDITIONAL GRADING INFORMATION

Polish **EXCELLENT**

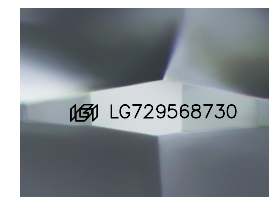
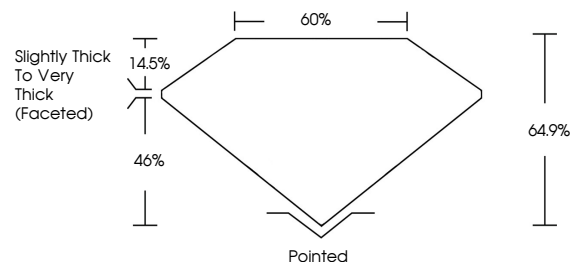
Symmetry **VERY GOOD**

Fluorescence **NONE**

Inscription(s) **IGI LG729568730**

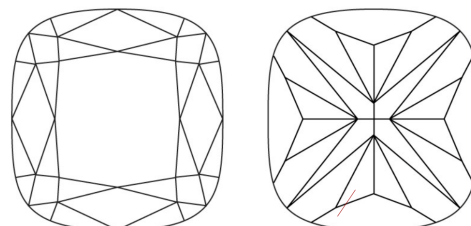
Comments: This Laboratory Grown Diamond was created by Chemical Vapor Deposition (CVD) growth process. Type IIa. Indications of post-growth treatment.

PROPORTIONS



Sample Image Used

CLARITY CHARACTERISTICS



KEY TO SYMBOLS

Red symbols indicate internal characteristics.
Green symbols indicate external characteristics.

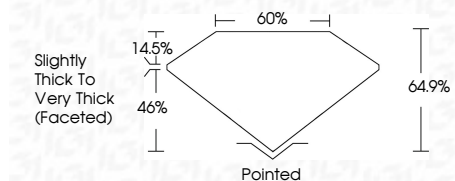
COLOR

D E F G H I J Faint Very Light Light

CLARITY

IF WS¹⁻² VS¹⁻² SI¹⁻² I¹⁻³

Internally Flawless Very Very Slightly Included Very Slightly Included Slightly Included Included



ADDITIONAL GRADING INFORMATION

Polish **EXCELLENT**

Symmetry **VERY GOOD**

Fluorescence **NONE**

Inscription(s) **IGI LG729568730**

Comments: This Laboratory Grown Diamond was created by Chemical Vapor Deposition (CVD) growth process. Type IIa. Indications of post-growth treatment.



September 23, 2025	IGI Report No LG729568730	2.51 CARATS	G	VS 2	GOOD	64.9%	60%	Slightly Thick to Very Thick (Faceted)	Pointed	EXCELLENT	VERY GOOD	NONE	IGI LG729568730
CUSHION MODIFIED BRILLIANT		Carat Weight	Color Grade	Clarity Grade	Cut Grade	Depth	Table	Grille	Culet	Polish	Symmetry	Fluorescence	Inscription(s)
<p>Comments: This Laboratory Grown Diamond was created by Chemical Vapor Deposition (CVD) growth process. Type IIa. Indications of post-growth treatment.</p>													