

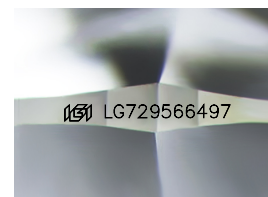
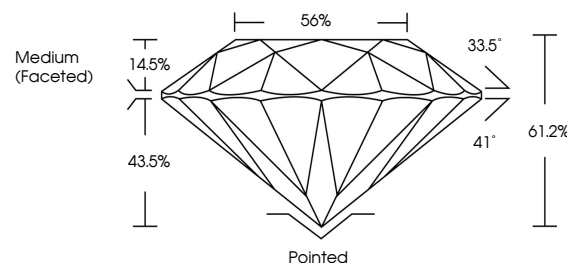


ELECTRONIC COPY

LABORATORY GROWN DIAMOND REPORT

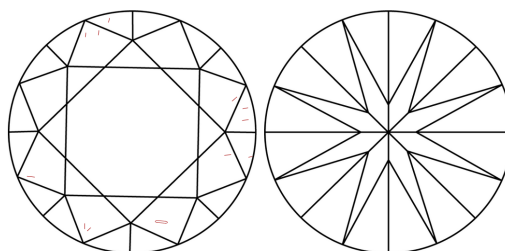
LG729566497
Report verification at iqi.org

PROPORTIONS



Sample Image Used

CLARITY CHARACTERISTICS



KEY TO SYMBOLS

Red symbols indicate internal characteristics.
Green symbols indicate external characteristics.

COLOR

D E F G H I J Faint Very Light Light

CLARITY

IF WS¹⁻² VS¹⁻² SI¹⁻² |¹⁻³

Internally Flawless	Very Very Slightly Included	Very Slightly Included	Slightly Included	Included
------------------------	--------------------------------	---------------------------	----------------------	----------



© IGI 2020, International Gemological Institute

FD - 10 20

www.igi.org

LABORATORY GROWN DIAMOND REPORT



August 25, 2025

IGI Report Number **LG729566497**Description **LABORATORY GROWN DIAMOND**Shape and Cutting Style **ROUND BRILLIANT**

Measurements 6.48 - 6.54 X 3.98 MM

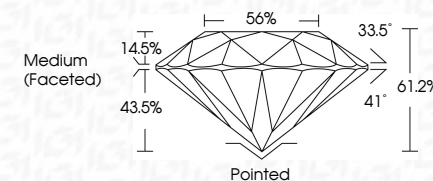
GRADING RESULTS

Carat Weight 1.03 CARAT

Color Grade D

Clarity Grade VS 1

Cut Grade **IDEAL**



ADDITIONAL GRADING INFORMATION

Polish **EXCELLENT**Symmetry **EXCELLENT**Fluorescence **NONE**Inscription(s) LG729566497

Comments: As Grown - No indication of post-growth treatment.

This Laboratory Grown Diamond was created by High Pressure High Temperature (HPHT) growth process.

Type II



August 26, 2026	GI Report No LG72956497	1.03 CARAT
ROUND BRILLIANT		D
	Color Grade	VS 1
	Clarity Grade	IDEAL
	Cut Grade	61.2%
	Depth	59%
	Table	
	Girdle	Medium (Faceted)
	Culet	Pointed
	Pavil	EXCELLENT
	Symmetry	EXCELLENT
	Fluorescence	NONE
	Inclusions(s)	#8 LG72956497
	Comments:	
	As Grown - No indication of post-growth treatment.	
	This Laboratory Grown Diamond was created by High Pressure High Temperature (HPHT) growth process.	
	Type II	