



ELECTRONIC COPY

LABORATORY GROWN DIAMOND REPORT

LG729564873
Report verification at igi.org

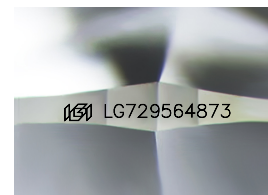
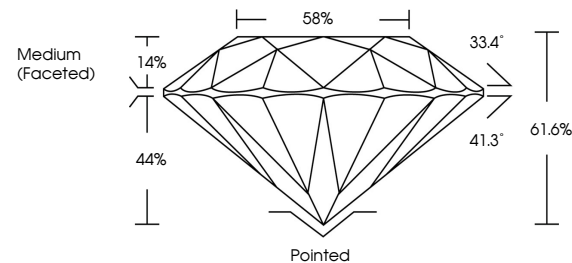
August 23, 2025	
IGI Report Number	LG729564873
Description	LABORATORY GROWN DIAMOND
Shape and Cutting Style	ROUND BRILLIANT
Measurements	9.28 - 9.32 X 5.73 MM
GRADING RESULTS	
Carat Weight	3.04 CARATS
Color Grade	E
Clarity Grade	VVS 2
Cut Grade	IDEAL

ADDITIONAL GRADING INFORMATION

Polish	EXCELLENT
Symmetry	EXCELLENT
Fluorescence	NONE
Inscription(s)	 LG729564873

Comments: This Laboratory Grown Diamond was created by Chemical Vapor Deposition (CVD) growth process.
Type IIa

PROPORTIONS



Sample Image Used

COLOR

D E F G H I J Faint Very Light Light

CLARITY

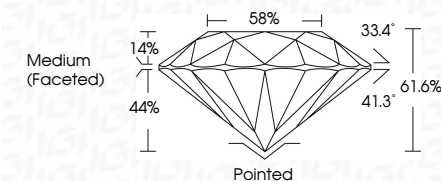
IF VS¹⁻² VS¹⁻² S¹⁻² |¹⁻³

Internally Flawless	Very Very Slightly Included	Very Slightly Included	Slightly Included	Included
------------------------	--------------------------------	---------------------------	----------------------	----------

LABORATORY GROWN DIAMOND REPORT



August 23, 2025	
IGI Report Number	LG729564873
Description	LABORATORY GROWN DIAMOND
Shape and Cutting Style	ROUND BRILLIANT
Measurements	9.28 - 9.32 X 5.73 MM
GRADING RESULTS	
Carat Weight	3.04 CARATS
Color Grade	E
Clarity Grade	VVS 2
Cut Grade	IDEAL



ADDITIONAL GRADING INFORMATION

Polish	EXCELLENT
Symmetry	EXCELLENT
Fluorescence	NONE
Inscription(s)	 LG729564873
<p>Comments: This Laboratory Grown Diamond was created by Chemical Vapor Deposition (CVD) growth process.</p> <p>Type IIa</p>	



© IGI 2020, International Gemological Institute

FD - 10 20



THIS DOCUMENT WAS PRODUCED WITH THE FOLLOWING SECURITY MEASURES: SPECIAL DOCUMENT PAPER, INK SCREENS, WATERMARK, BACKGROUND DESIGNS, HOLOGRAM, AND OTHER SECURITY FEATURES NOT LISTED AND DO EXCEED DOCUMENT SECURITY INDUSTRY GUIDELINES

www.igi.org

August 23, 2025
IGI Report No LG729564873
ROUND BRILLIANT

9.28 - 9.32 X 5.73 MM	3.04 CARATS	
Carat Weight	VVS 2	Polished
Color Grade	IDEAL	EXCELLENT
Cut Grade	61.0%	EXCELLENT
Depth	58%	NONE
Table	Medium (Faceted)	Fluorescence
Girdle		
Culet		
Polish		
Symmetry		
Fluorescence		

Comments:
This Laboratory Grown Diamond was created by Chemical Vapor Deposition (CVD) growth process.