



LABORATORY GROWN DIAMOND REPORT

August 24, 2025
 IGI Report Number **LG729561748**
 Description **LABORATORY GROWN DIAMOND**
 Shape and Cutting Style **ROUND BRILLIANT**
 Measurements **5.02 - 5.06 X 3.07 MM**

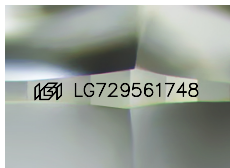
GRADING RESULTS

Carat Weight **0.48 CARAT**
 Color Grade **F**
 Clarity Grade **VVS 2**
 Cut Grade **IDEAL**

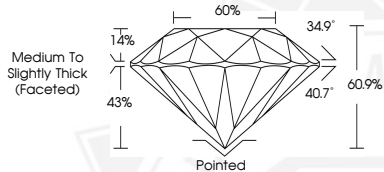
ADDITIONAL GRADING INFORMATION

Polish **EXCELLENT**
 Symmetry **EXCELLENT**
 Fluorescence **NONE**
 Inscription(s) **IGI LG729561748**

Comments: This Laboratory Grown Diamond was created by Chemical Vapor Deposition (CVD) growth process. Type IIa



Sample Image Used



August 24, 2025
 IGI Report Number **LG729561748**
ROUND BRILLIANT
LABORATORY GROWN DIAMOND
5.02 - 5.06 X 3.07 MM
 Carat Weight **0.48 CARAT**
 Color Grade **F**
 Clarity Grade **VVS 2**
 Cut Grade **IDEAL**
 Polish **EXCELLENT**
 Symmetry **EXCELLENT**
 Fluorescence **NONE**
 Inscription(s) **IGI LG729561748**
 Comments: This Laboratory Grown Diamond was created by Chemical Vapor Deposition (CVD) growth process. Type IIa



August 24, 2025
 IGI Report Number **LG729561748**
ROUND BRILLIANT
LABORATORY GROWN DIAMOND
5.02 - 5.06 X 3.07 MM
 Carat Weight **0.48 CARAT**
 Color Grade **F**
 Clarity Grade **VVS 2**
 Cut Grade **IDEAL**
 Polish **EXCELLENT**
 Symmetry **EXCELLENT**
 Fluorescence **NONE**
 Inscription(s) **IGI LG729561748**
 Comments: This Laboratory Grown Diamond was created by Chemical Vapor Deposition (CVD) growth process. Type IIa



THIS DOCUMENT WAS PRODUCED WITH THE FOLLOWING SECURITY MEASURES: SPECIAL DOCUMENT PAPER, INK SCREENS, WATERMARK, BACKGROUND DESIGNS, HOLOGRAM AND OTHER SECURITY FEATURES NOT LISTED AND DO EXCEED DOCUMENT SECURITY INDUSTRY GUIDELINES.