



ELECTRONIC COPY

LG729561509
Report verification at igi.org



August 23, 2025
IGI Report Number **LG729561509**
Description **LABORATORY GROWN DIAMOND**
Shape and Cutting Style **CUT CORNERED SQUARE
MODIFIED BRILLIANT**
Measurements **7.36 X 7.28 X 4.40 MM**
GRADING RESULTS
Carat Weight **2.05 CARATS**
Color Grade **E**
Clarity Grade **INTERNALLY FLAWLESS**

LABORATORY GROWN DIAMOND REPORT

August 23, 2025
IGI Report Number **LG729561509**
Description **LABORATORY GROWN DIAMOND**
Shape and Cutting Style **CUT CORNERED SQUARE
MODIFIED BRILLIANT**
Measurements **7.36 X 7.28 X 4.40 MM**

GRADING RESULTS

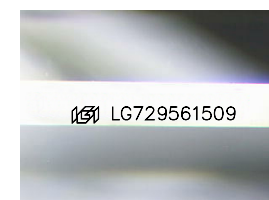
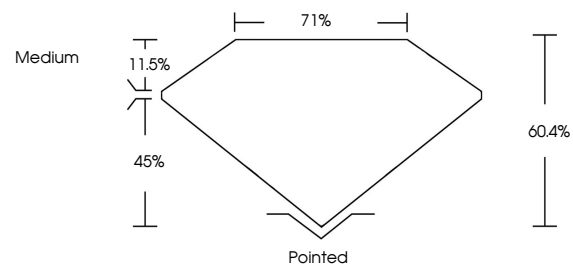
Carat Weight **2.05 CARATS**
Color Grade **E**
Clarity Grade **INTERNALLY FLAWLESS**

ADDITIONAL GRADING INFORMATION

Polish **EXCELLENT**
Symmetry **EXCELLENT**
Fluorescence **NONE**
Inscription(s) **IGI LG729561509**

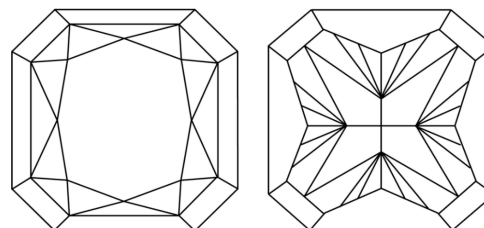
Comments: This Laboratory Grown Diamond was created by Chemical Vapor Deposition (CVD) growth process.
Type IIa

PROPORTIONS



Sample Image Used

CLARITY CHARACTERISTICS



KEY TO SYMBOLS

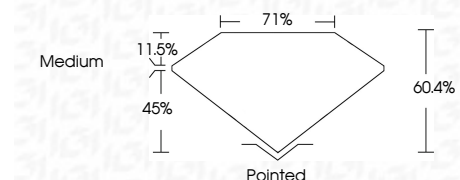
Red symbols indicate internal characteristics.
Green symbols indicate external characteristics.

COLOR

D E F G H I J Faint Very Light Light

CLARITY

IF	VS ¹⁻²	VS ¹⁻²	SI ¹⁻²	I ¹⁻³
Internally Flawless	Very Very Slightly Included	Very Slightly Included	Slightly Included	Included



ADDITIONAL GRADING INFORMATION

Polish **EXCELLENT**
Symmetry **EXCELLENT**
Fluorescence **NONE**
Inscription(s) **IGI LG729561509**
Comments: This Laboratory Grown Diamond was created by Chemical Vapor Deposition (CVD) growth process.
Type IIa



IGI



August 23, 2025
IGI Report No LG729561509
CUT CORNERED SQUARE MODIFIED BRILLIANT
7.36 X 7.28 X 4.40 MM
2.05 CARATS
E
LF
60.4%
71%
Medium
Pointed
EXCELLENT
EXCELLENT
NONE
IGI LG729561509
Comments: This Laboratory Grown Diamond was created by Chemical Vapor Deposition (CVD) growth process.
Type IIa