



ELECTRONIC COPY

LG729555966
Report verification at igi.org



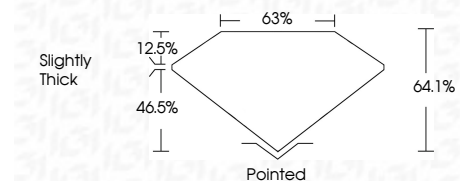
August 25, 2025
IGI Report Number **LG729555966**
Description **LABORATORY GROWN DIAMOND**

Shape and Cutting Style **CUT CORNERED
RECTANGULAR MODIFIED
BRILLIANT**

Measurements **10.48 X 6.76 X 4.33 MM**

GRADING RESULTS

Carat Weight **2.73 CARATS**
Color Grade **E**
Clarity Grade **INTERNALLY FLAWLESS**



ADDITIONAL GRADING INFORMATION

Polish **EXCELLENT**
Symmetry **EXCELLENT**
Fluorescence **NONE**
Inscription(s) **IGI LG729555966**
Comments: This Laboratory Grown Diamond was created by Chemical Vapor Deposition (CVD) growth process. Type IIa



August 25, 2025
IGI Report No LG729555966
CUT CORNERED RECT. MODIFIED BRILLIANT
10.48 X 6.76 X 4.33 MM
2.73 CARATS
E
LF
64.1%
63%
Slightly Thick
Pointed
EXCELLENT
EXCELLENT
NONE
IGI LG729555966
Comments: This Laboratory Grown Diamond was created by Chemical Vapor Deposition (CVD) growth process. Type IIa

LABORATORY GROWN DIAMOND REPORT

August 25, 2025
IGI Report Number **LG729555966**
Description **LABORATORY GROWN DIAMOND**
Shape and Cutting Style **CUT CORNERED RECTANGULAR
MODIFIED BRILLIANT**
Measurements **10.48 X 6.76 X 4.33 MM**

GRADING RESULTS

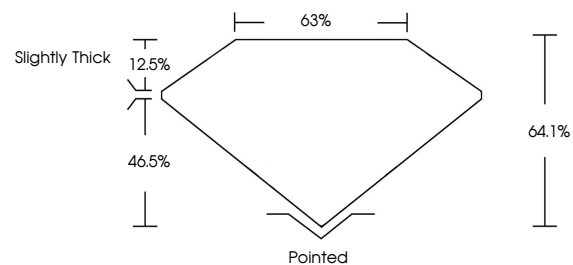
Carat Weight **2.73 CARATS**
Color Grade **E**
Clarity Grade **INTERNALLY FLAWLESS**

ADDITIONAL GRADING INFORMATION

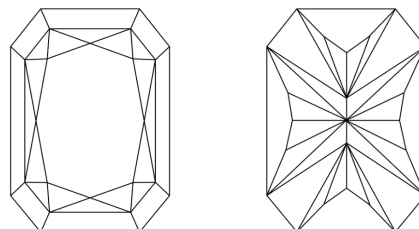
Polish **EXCELLENT**
Symmetry **EXCELLENT**
Fluorescence **NONE**
Inscription(s) **IGI LG729555966**

Comments: This Laboratory Grown Diamond was created by Chemical Vapor Deposition (CVD) growth process. Type IIa

PROPORTIONS

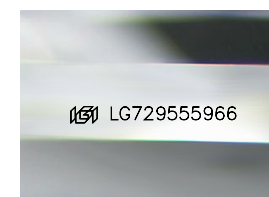


CLARITY CHARACTERISTICS



KEY TO SYMBOLS

Red symbols indicate internal characteristics.
Green symbols indicate external characteristics.



Sample Image Used

COLOR

D E F G H I J Faint Very Light Light

CLARITY

IF VS¹⁻² VS¹⁻² SI¹⁻² I¹⁻³
Internally Flawless Very Very Slightly Included Very Slightly Included Slightly Included Included

