



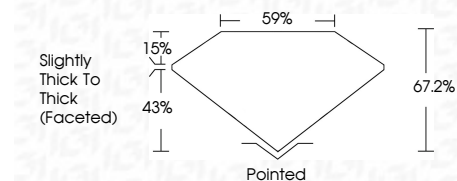
**ELECTRONIC COPY**

LG729554311  
Report verification at igi.org



August 22, 2025  
IGI Report Number **LG729554311**  
Description **LABORATORY GROWN DIAMOND**  
Shape and Cutting Style **RECTANGULAR CUSHION MIXED CUT**  
Measurements **8.66 X 6.80 X 4.57 MM**

**GRADING RESULTS**  
Carat Weight **2.12 CARATS**  
Color Grade **D**  
Clarity Grade **VS 1**



**ADDITIONAL GRADING INFORMATION**  
Polish **EXCELLENT**  
Symmetry **EXCELLENT**  
Fluorescence **NONE**  
Inscription(s) **(IGI) LG729554311**  
Comments: This Laboratory Grown Diamond was created by Chemical Vapor Deposition (CVD) growth process. Type IIa



August 22, 2025  
IGI Report No LG729554311  
RECTANGULAR CUSHION MIXED CUT  
8.66 X 6.80 X 4.57 MM  
2.12 CARATS  
D  
2.12 CARATS  
D  
67.2%  
43%  
Slightly Thick To Thick (Faceted)  
Pointed  
EXCELLENT  
EXCELLENT  
NONE  
(IGI) LG729554311  
Comments: This Laboratory Grown Diamond was created by Chemical Vapor Deposition (CVD) growth process. Type IIa

**LABORATORY GROWN DIAMOND REPORT**

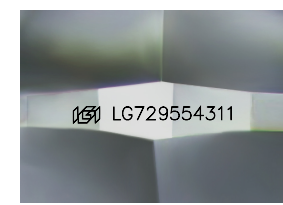
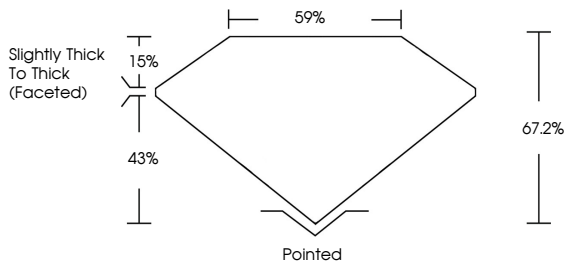
August 22, 2025  
IGI Report Number **LG729554311**  
Description **LABORATORY GROWN DIAMOND**  
Shape and Cutting Style **RECTANGULAR CUSHION MIXED CUT**  
Measurements **8.66 X 6.80 X 4.57 MM**

**GRADING RESULTS**  
Carat Weight **2.12 CARATS**  
Color Grade **D**  
Clarity Grade **VS 1**

**ADDITIONAL GRADING INFORMATION**  
Polish **EXCELLENT**  
Symmetry **EXCELLENT**  
Fluorescence **NONE**  
Inscription(s) **(IGI) LG729554311**

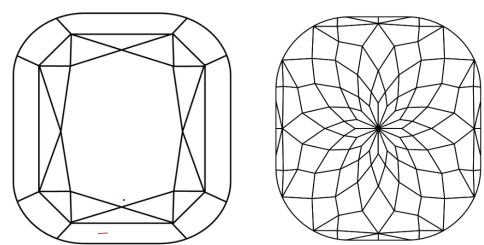
Comments: This Laboratory Grown Diamond was created by Chemical Vapor Deposition (CVD) growth process. Type IIa

**PROPORTIONS**



Sample Image Used

**CLARITY CHARACTERISTICS**



**KEY TO SYMBOLS**  
Red symbols indicate internal characteristics.  
Green symbols indicate external characteristics.

**COLOR**

D	E	F	G	H	I	J	Faint	Very Light	Light
---	---	---	---	---	---	---	-------	------------	-------

**CLARITY**

IF	VS <sup>1-2</sup>	VS <sup>1-2</sup>	SI <sup>1-2</sup>	I <sup>1-3</sup>
Internally Flawless	Very Very Slightly Included	Very Slightly Included	Slightly Included	Included



August 22, 2025  
IGI Report No LG729554311  
RECTANGULAR CUSHION MIXED CUT  
8.66 X 6.80 X 4.57 MM  
2.12 CARATS  
D  
67.2%  
43%  
Slightly Thick To Thick (Faceted)  
Pointed  
EXCELLENT  
EXCELLENT  
NONE  
(IGI) LG729554311  
Comments: This Laboratory Grown Diamond was created by Chemical Vapor Deposition (CVD) growth process. Type IIa