



ELECTRONIC COPY

LG729553502
Report verification at igi.org



August 27, 2025
IGI Report Number **LG729553502**
Description **LABORATORY GROWN DIAMOND**
Shape and Cutting Style **OVAL BRILLIANT**
Measurements **8.00 X 5.68 X 3.47 MM**
GRADING RESULTS
Carat Weight **1.01 CARAT**
Color Grade **FANCY DEEP ORANGE**
Clarity Grade **VS 1**

August 27, 2025
IGI Report Number **LG729553502**
Description **LABORATORY GROWN DIAMOND**
Shape and Cutting Style **OVAL BRILLIANT**
Measurements **8.00 X 5.68 X 3.47 MM**

GRADING RESULTS

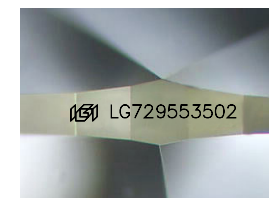
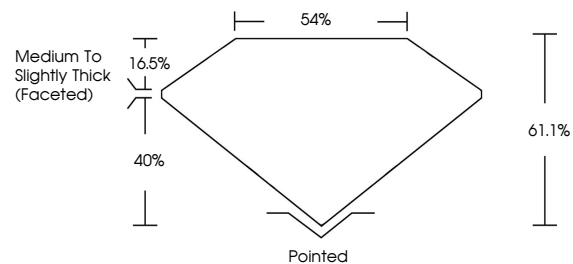
Carat Weight **1.01 CARAT**
Color Grade **FANCY DEEP ORANGE**
Clarity Grade **VS 1**

ADDITIONAL GRADING INFORMATION

Polish **EXCELLENT**
Symmetry **EXCELLENT**
Fluorescence **NONE**
Inscription(s) **IGI LG729553502**

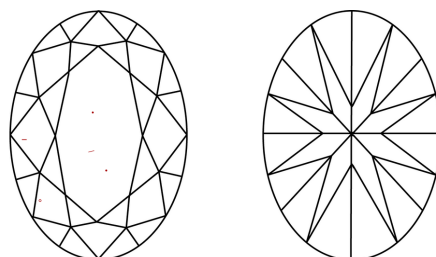
Comments: This Laboratory Grown Diamond was created by Chemical Vapor Deposition (CVD) growth process. Indications of post-growth treatment.

PROPORTIONS



Sample Image Used

CLARITY CHARACTERISTICS



KEY TO SYMBOLS

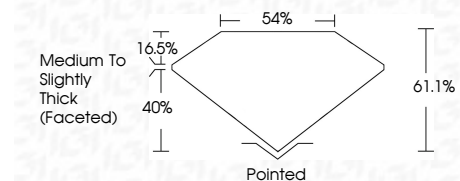
Red symbols indicate internal characteristics.
Green symbols indicate external characteristics.

COLOR

D E F G H I J Faint Very Light Light

CLARITY

IF	WS ¹⁻²	VS ¹⁻²	SI ¹⁻²	I ¹⁻³
Internally Flawless	Very Very Slightly Included	Very Slightly Included	Slightly Included	Included



ADDITIONAL GRADING INFORMATION

Polish **EXCELLENT**
Symmetry **EXCELLENT**
Fluorescence **NONE**
Inscription(s) **IGI LG729553502**
Comments: This Laboratory Grown Diamond was created by Chemical Vapor Deposition (CVD) growth process. Indications of post-growth treatment.



August 27, 2025
IGI Report No LG729553502
OVAL BRILLIANT
Carat Weight **1.01 CARAT**
Color Grade **FANCY DEEP ORANGE**
Clarity Grade **VS 1**
Depth **61.1%**
Table **54%**
Girdle **Medium to Slightly Thick (Faceted)**
Culet **Pointed**
Polish **EXCELLENT**
Symmetry **EXCELLENT**
Fluorescence **NONE**
Inscription(s) **IGI LG729553502**
Comments: This Laboratory Grown Diamond was created by Chemical Vapor Deposition (CVD) growth process. Indications of post-growth treatment.