



ELECTRONIC COPY

LABORATORY GROWN DIAMOND REPORT

August 26, 2025	
IGI Report Number	LG729550876
Description	LABORATORY GROWN DIAMOND
Shape and Cutting Style	ROUND BRILLIANT
Measurements	9.31 - 9.39 X 5.66 MM
GRADING RESULTS	
Carat Weight	3.06 CARATS
Color Grade	D
Clarity Grade	INTERNALLY FLAWLESS
Cut Grade	IDEAL

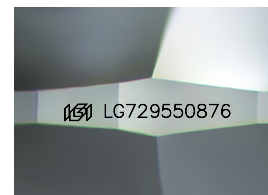
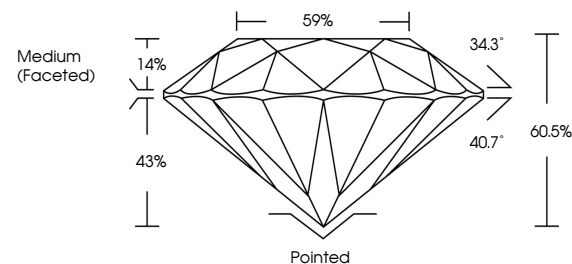
ADDITIONAL GRADING INFORMATION

Polish	EXCELLENT
Symmetry	EXCELLENT
Fluorescence	NONE
Inscription(s)	15 LG729550876

Comments: As Grown - No indication of post-growth treatment.
This Laboratory Grown Diamond was created by High Pressure High Temperature (HPHT) growth process.
Type II

LG729550876
Report verification at igi.org

PROPORTIONS



Sample Image Used

COLOR

D E F G H I J Faint Very Light Light

CLARITY

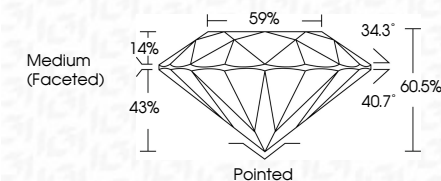
IF VS¹⁻² VS¹⁻² S¹⁻² |¹⁻³

Internally Flawless	Very Very Slightly Included	Very Slightly Included	Slightly Included	Included
---------------------	-----------------------------	------------------------	-------------------	----------

LABORATORY GROWN DIAMOND REPORT



August 26, 2025	
IGI Report Number	LG729550876
Description	LABORATORY GROWN DIAMOND
Shape and Cutting Style	ROUND BRILLIANT
Measurements	9.31 - 9.39 X 5.66 MM
GRADING RESULTS	
Carat Weight	3.06 CARATS
Color Grade	D
Clarity Grade	INTERNALLY FLAWLESS
Cut Grade	IDEAL



ADDITIONAL GRADING INFORMATION

Polish	EXCELLENT
Symmetry	EXCELLENT
Fluorescence	NONE
Inscription(s)	(G) LG729550876
<p>Comments: As Grown - No indication of post-growth treatment.</p> <p>This Laboratory Grown Diamond was created by High Pressure High Temperature (HPHT) growth process.</p> <p>Type II</p>	



© IGI 2020, International Gemological Institute

FD - 10 20

www.igi.org



THIS DOCUMENT WAS PRODUCED WITH THE FOLLOWING SECURITY MEASURES: SPECIAL DOCUMENT PAPER, INK SCREENS, WATERMARK, BACKGROUND DESIGNS, HOLOGRAM AND OTHER SECURITY FEATURES NOT LISTED AND DO EXCEED DOCUMENT SECURITY INDUSTRY GUIDELINES

August 26, 2025
GI Report No LG729550876
ROUND BRILLIANT

3.1 - 3.99 X 5.66 MM	Carat Weight	3.06 CARATS
	Color Grade	D
	Clarity Grade	IF
	Cut Grade	IDEAL
	Depth	60.05%
	Table	59%
	Girdle	Medium (Faceted)
	Culet	Pointed
	Polish	EXCELLENT
	Symmetry	EXCELLENT
	Fluorescence	NONE
	Measurements	4mm (2.99mm-5.99mm)

Comments:
As Grown - No indication of post-growth treatment.